

MADE to MEASURE



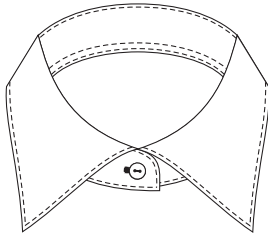
BLOUSE

Collar
with 1 button
collar depths
30, 35 and 40 mm

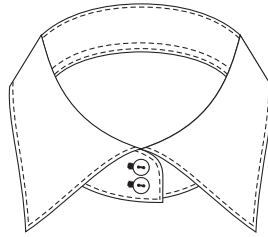
Collars
with 2 buttons
collar depths
40, 45 and 50 mm only

Collars
with 3 buttons
collar depth
50 mm only

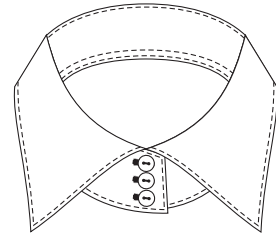
WINDSOR



code
1A1

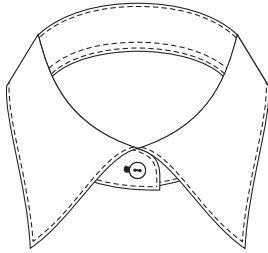


code
1A2

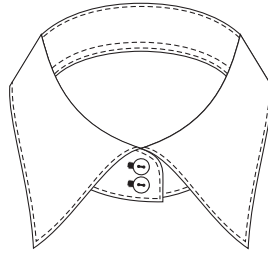


code
1A3

KENT

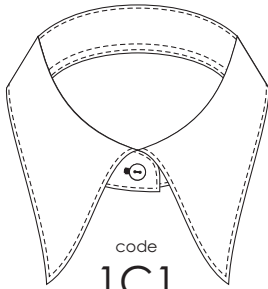


code
1B1

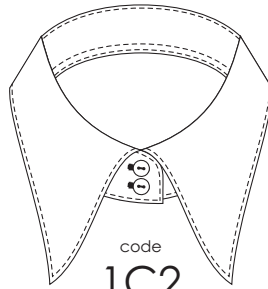


code
1B2

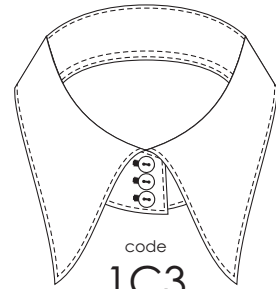
LONDON



code
1C1

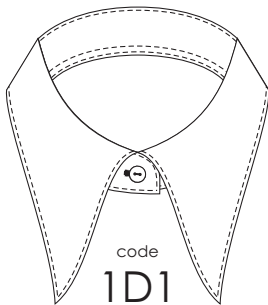


code
1C2

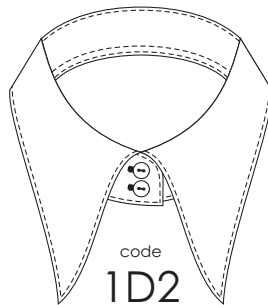


code
1C3

KING

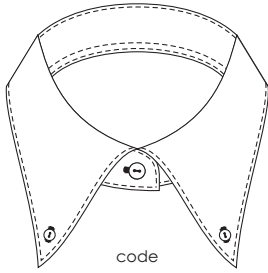


code
1D1



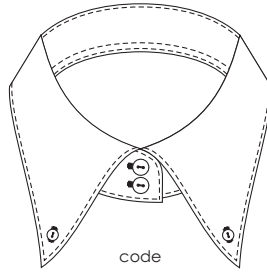
code
1D2

Collar
with 1 button
collar depths
30, 35 and 40 mm



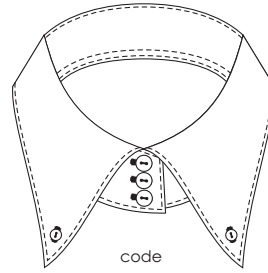
code
1E1

Collars
with 2 buttons
collar depths
40, 45 and 50 mm only



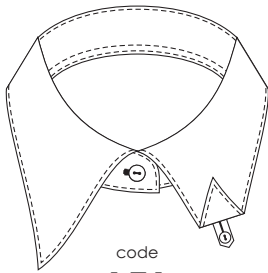
code
1E2

Collars
with 3 buttons
collar depth
50 mm only

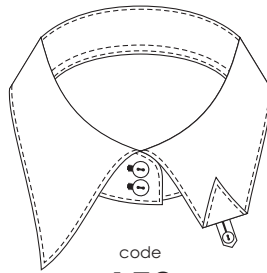


code
1E3

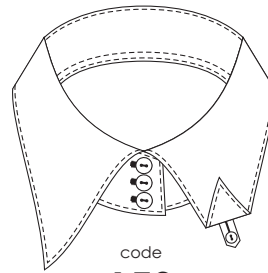
Button Down



code
1F1

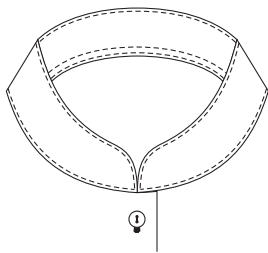


code
1F2



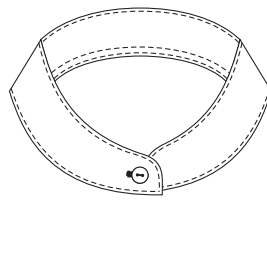
code
1F3

Button Down
concealed buttons



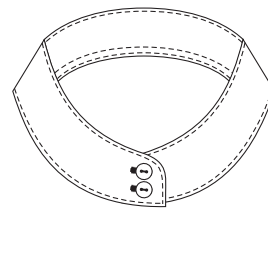
code
1G0

collar depth 35 mm



code
1G1

collar depth 35 mm

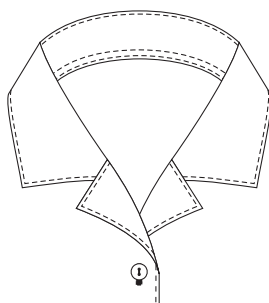


code
1G2

collar depth 40 mm

Nehru
Collar

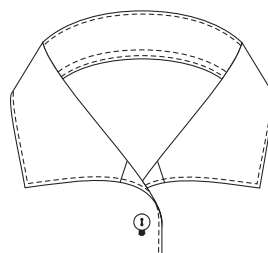
Vario Collar



code
1N1

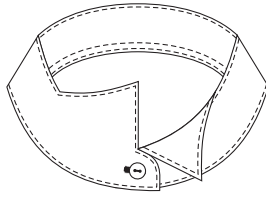
collar depth 35 mm
Possible with front 2B1 only!

Casual Collar



code
1O1

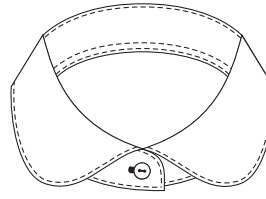
Fashion Collars



Collar WING
code

1H1

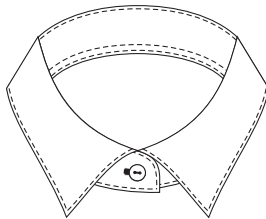
collar depth
35 mm



Collar PENNY
code

1M1

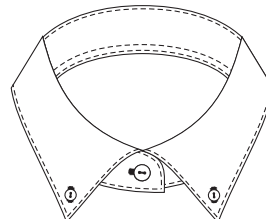
collar depths
30, 35 and 40 mm



Collar TINY
code

1T1

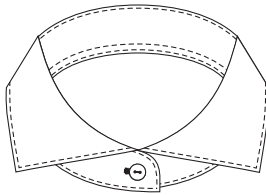
collar depth
30 mm



Collar SMART
code

1S1

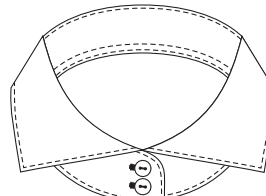
collar depth
35 mm



Collar HAI
code

1Q1

collar depths
35 and 40 mm



Collar HAI
code

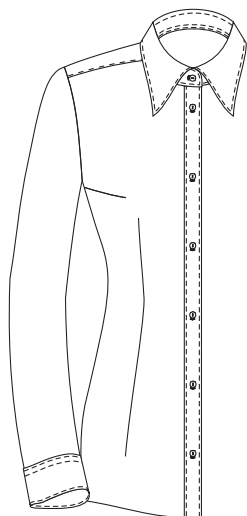
1Q2

collar depth
40 mm

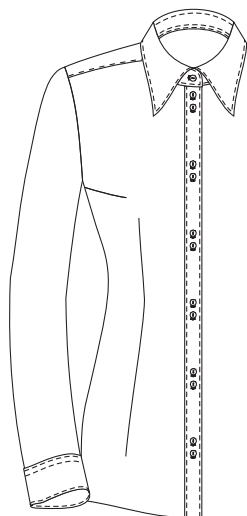
normal buttons

buttons pairs

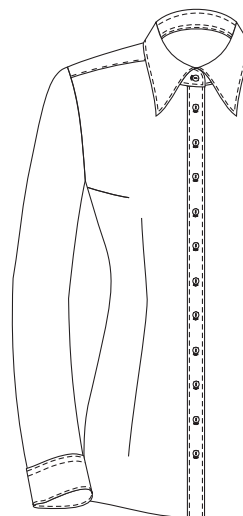
double buttons



code
2A1

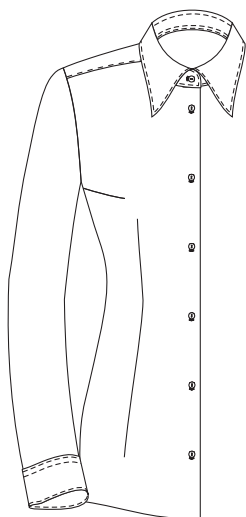


code
2A2 *

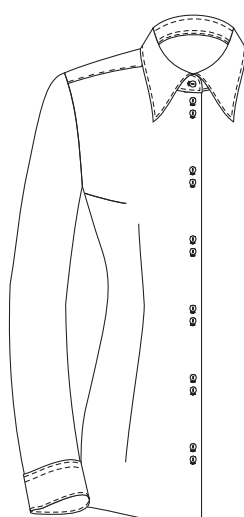


code
2A4 *

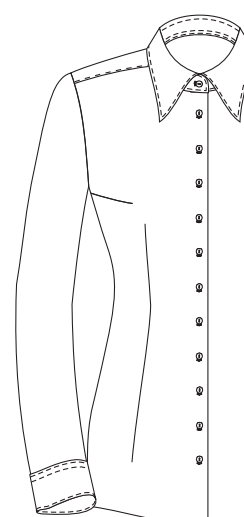
double gusset
width 30 mm



code
2B1



code
2B2 *



code
2B4 *

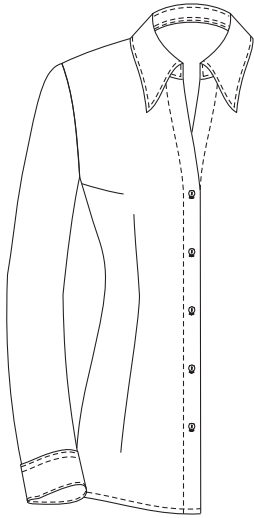
single gusset

normal buttons

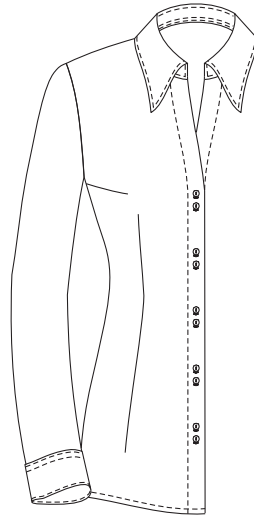
buttons pairs

double buttons

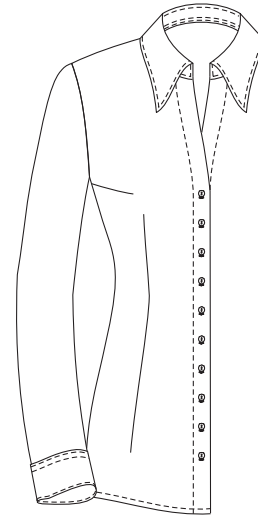
single gusset with opening



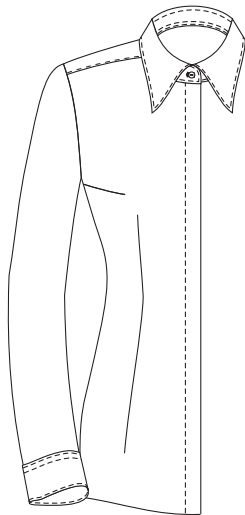
code
2J1



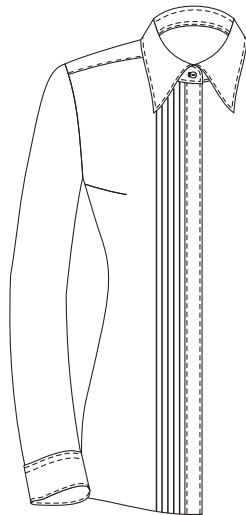
code
2J2*



code
2J4*

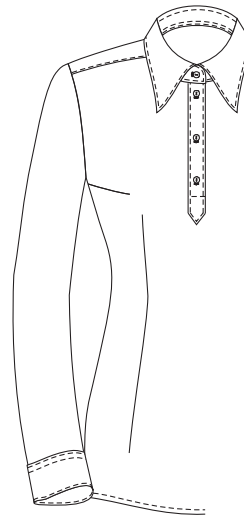


code
2C1
concealed
buttons
gusset width
30 mm

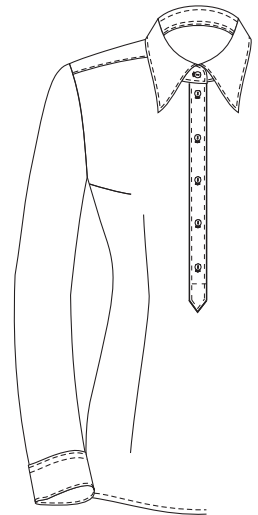


code
2D1*
pleated front,
concealed buttons,
gusset width
30 mm

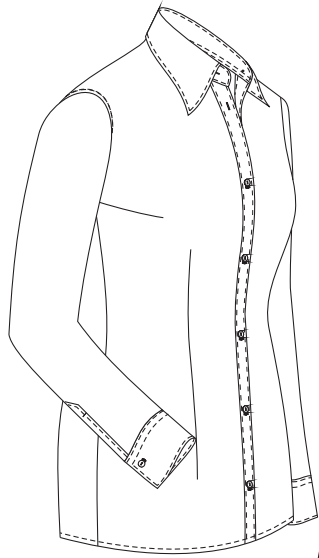
NO DARTS ON FRONT POSSIBLE!
PLEATED FRONT AVAILABLE IN WHITE ONLY!



code
2F3
polo closing
3 buttons
gusset width 30 mm
gusset length 20 cm

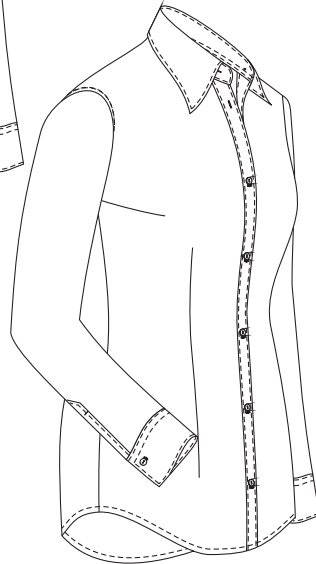


code
2F5
polo closing
5 buttons
gusset width 30 mm
gusset length 32 cm



code
3A

straight blouse
bottom



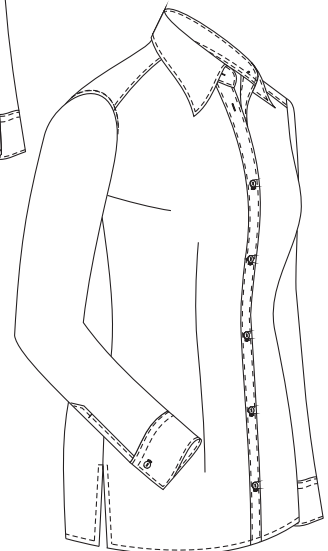
code
3B

tail blouse



code
3C

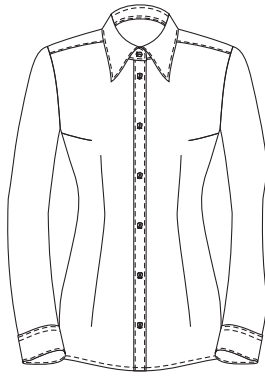
tail blouse
with butterfly gusset
(always white)



code
3D

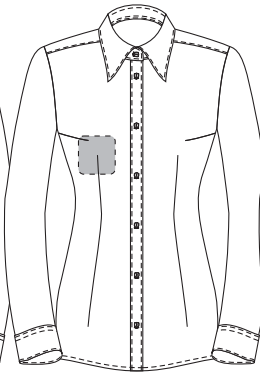
straight blouse bottom with vents
(front and back have the same length)

front
without pockets



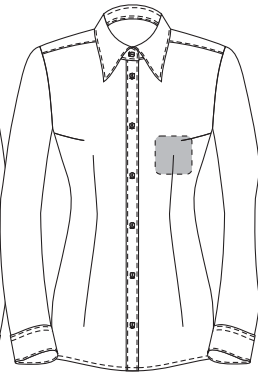
code
4A

pocket
right breast



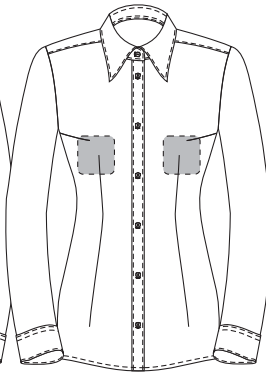
code
4xR

pocket
left breast



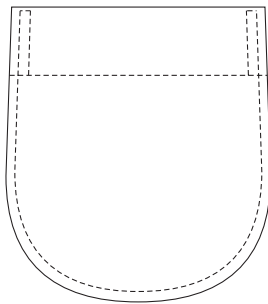
code
4xL

two pockets
left & right



code
4xB

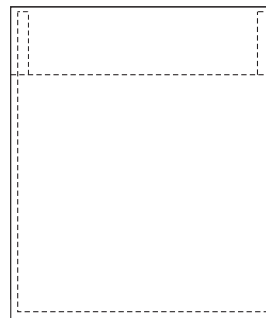
pocket round



code
4HL pocket
left

code
4HB pockets
both sides

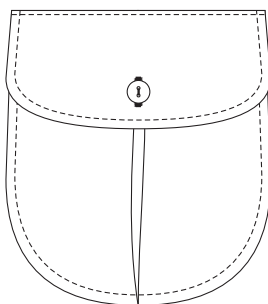
pocket straight



code
4EL pocket
left

code
4EB pockets
both sides

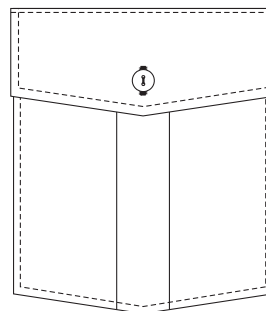
pocket rounded
pleat, flap & button



code
4JL pocket
left

code
4JB pockets
both sides

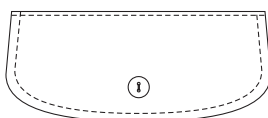
pocket pointed
pleat, flap & button



code
4IL pocket
left

code
4IB pockets
both sides

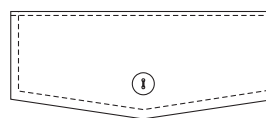
fake flap
rounded



code
4LL pocket
left

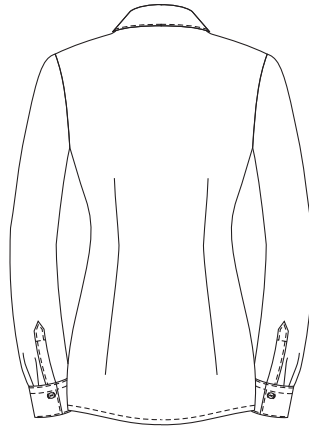
code
4LB pockets
both sides

fake flap
pointed

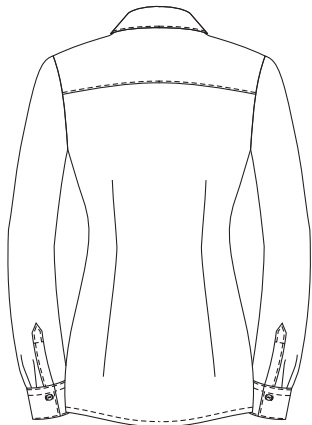


code
4KL pocket
left

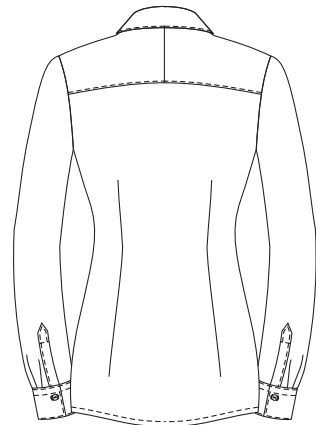
code
4KB pockets
both sides



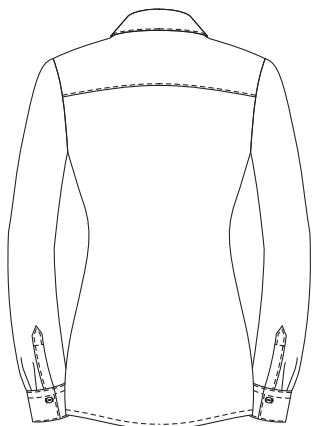
code
5M
two back darts,
without yoke



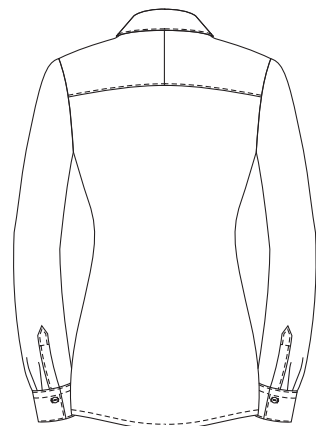
code
5FG
two back darts,
flat yoke



code
5FT
two back darts
split yoke



code
5AG
straight back,
flat yoke



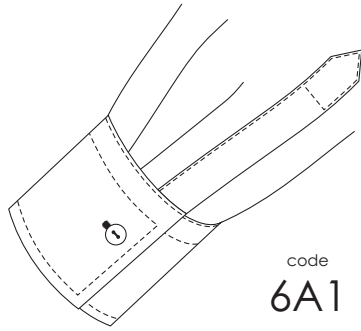
code
5AT
straight back
split yoke

1 button
cuff height 50, 65 and 80 mm

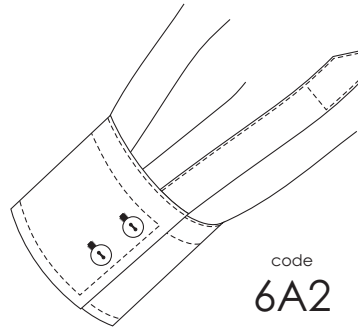
2 buttons
cuff height 65 and 80 mm

3 buttons
cuff height 80 mm

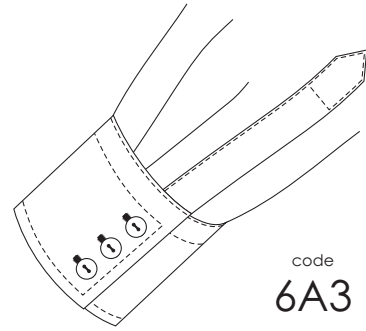
single cuff
straight



code
6A1

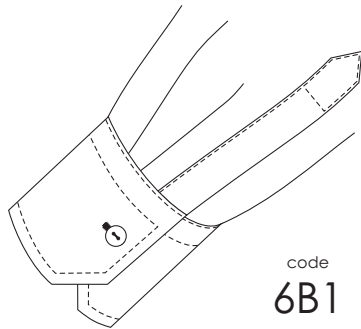


code
6A2

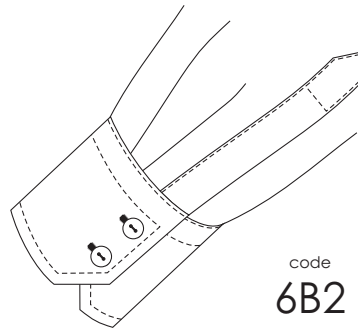


code
6A3

single cuff
bevelled

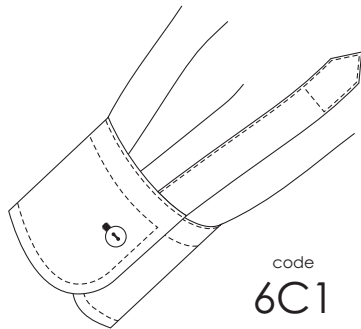


code
6B1

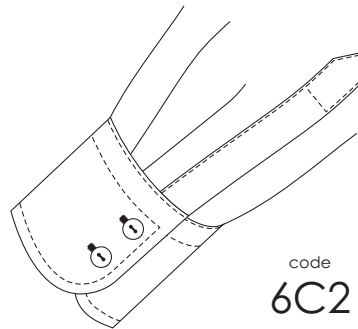


code
6B2

single cuff
round

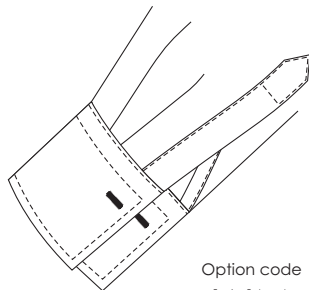


code
6C1



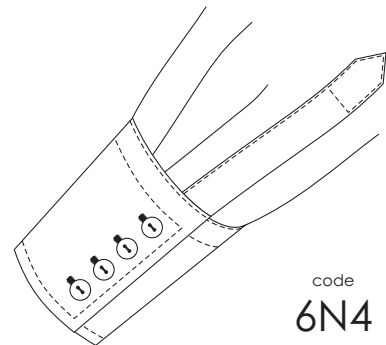
code
6C2

4 buttons, single cuff
cuff height 120 mm



Option code
WM

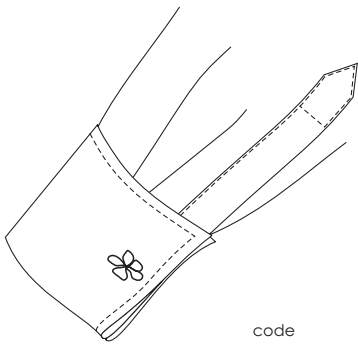
closing option



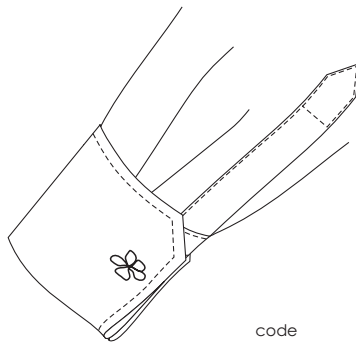
code
6N4

Vienna cuff, single cuff,
closing for cuff buttons

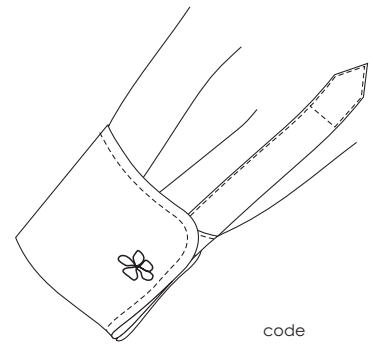
Double cuffs
cuff height 70 or 90 mm



code
6D1
straight

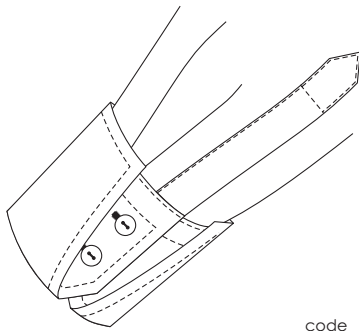


code
6E1
bevelled

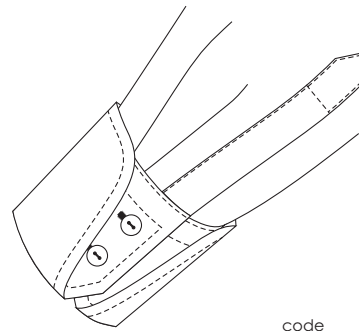


code
6F1
round

Double cuffs with buttons
cuff height 70 or 90 mm

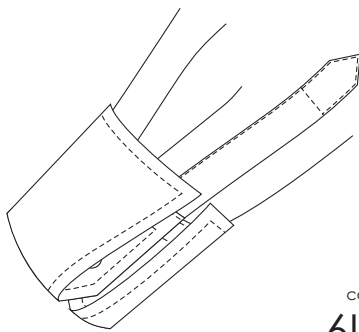


code
6J2
straight



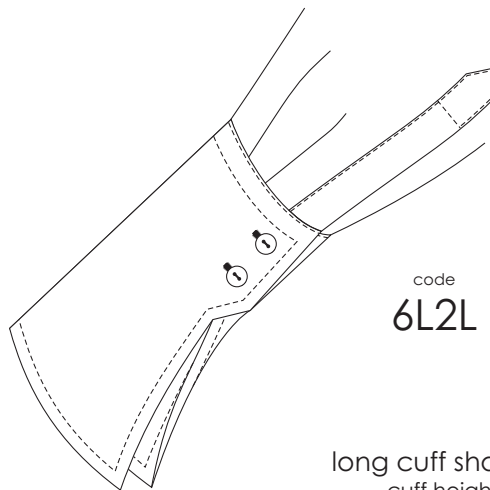
code
6K2
round

Fashion Cuffs



code
6L2T

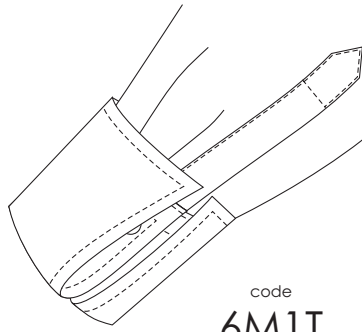
turn cuff shaped flared
cuff height 70 mm



code
6L2L

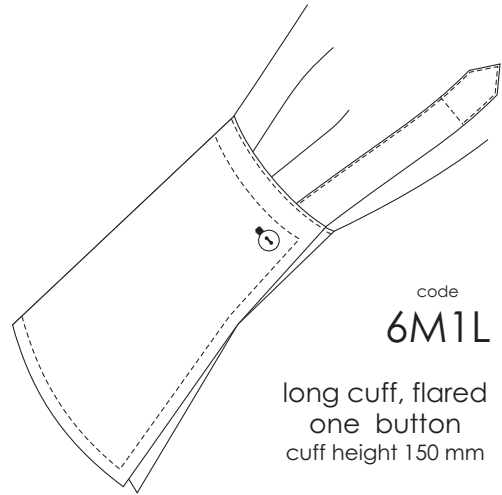
long cuff shaped flared
cuff height 135 mm

Fashion Cuffs



code
6M1T

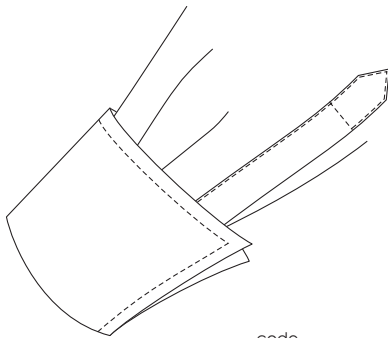
turn cuff, flared
one button
cuff height 80 mm



code
6M1L

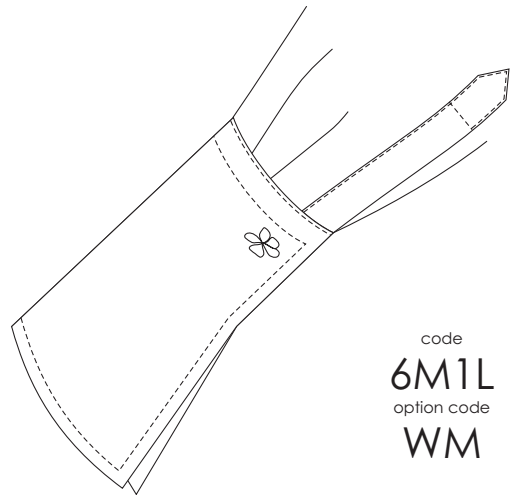
long cuff, flared
one button
cuff height 150 mm

Variations using code WM for CUFFLINKS



code
6M1T
option code
WM

turn cuff, flared
one button
cuff height 80 mm

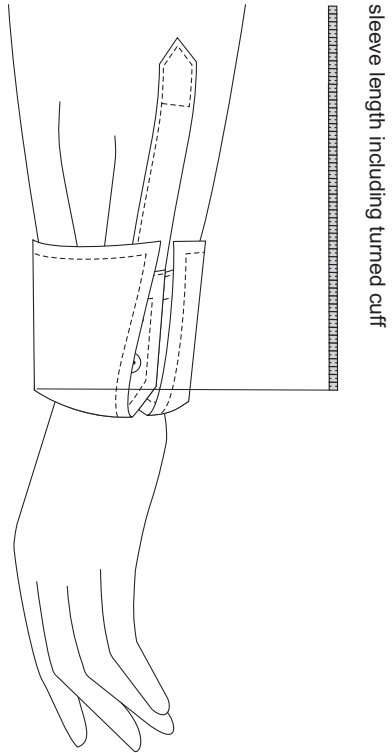


code
6M1L
option code
WM

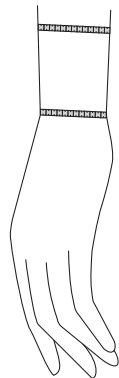
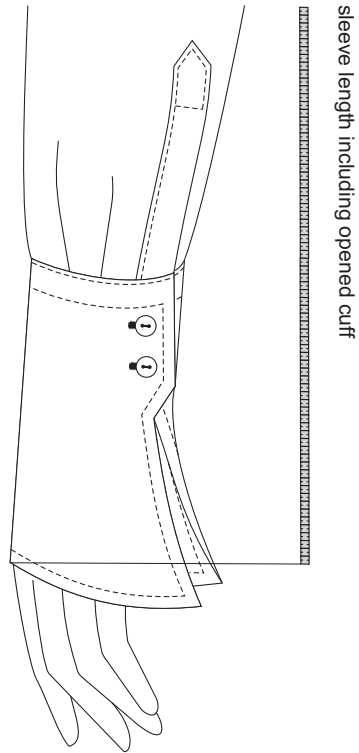
long cuff, flared
one button
cuff height 150 mm

Two ways how to wear your cuff

turn cuff

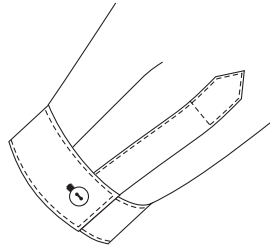
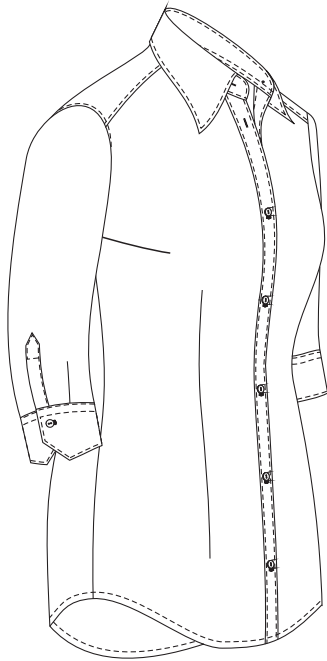


long cuff



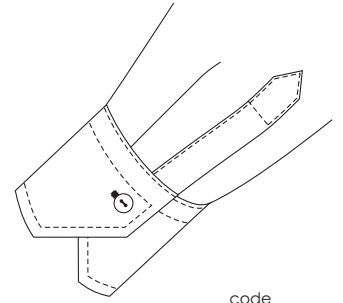
Please take care, where you take the measurement for the cuff width.

3/4 sleeves



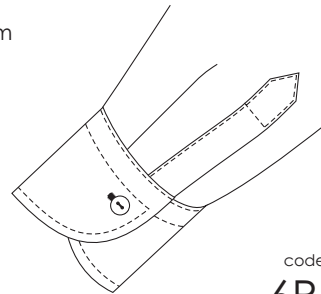
code
6P1

single cuff, straight,
1 button
cuff height 25 mm



code
6Q1

single cuff, bevelled
1 button
cuff height 50 mm

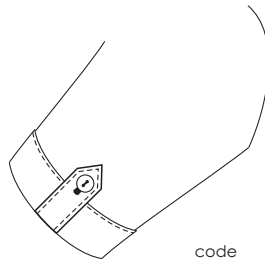
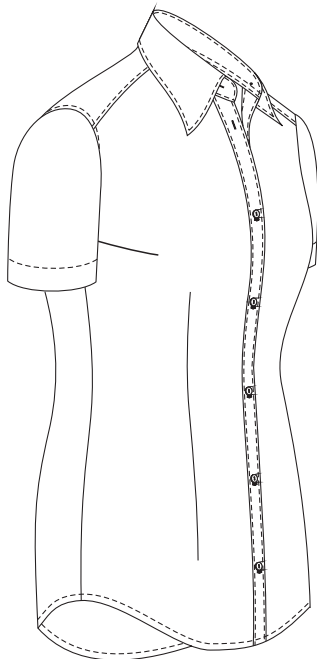


code
6R1

single cuff, round,
1 button
cuff height 50 mm

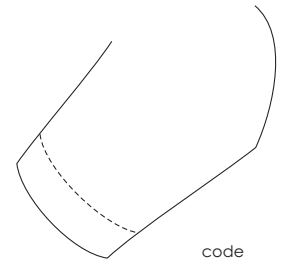
Short sleeves

sleeve length 18 to 25 cm
1/2 width min 18 cm



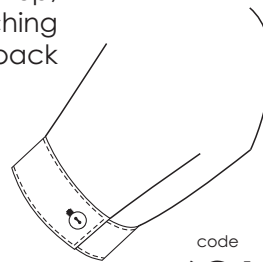
code
6I1

turn up,
top stitching
with tie back



code
6G1

single, with top
stitching,
width 30 mm

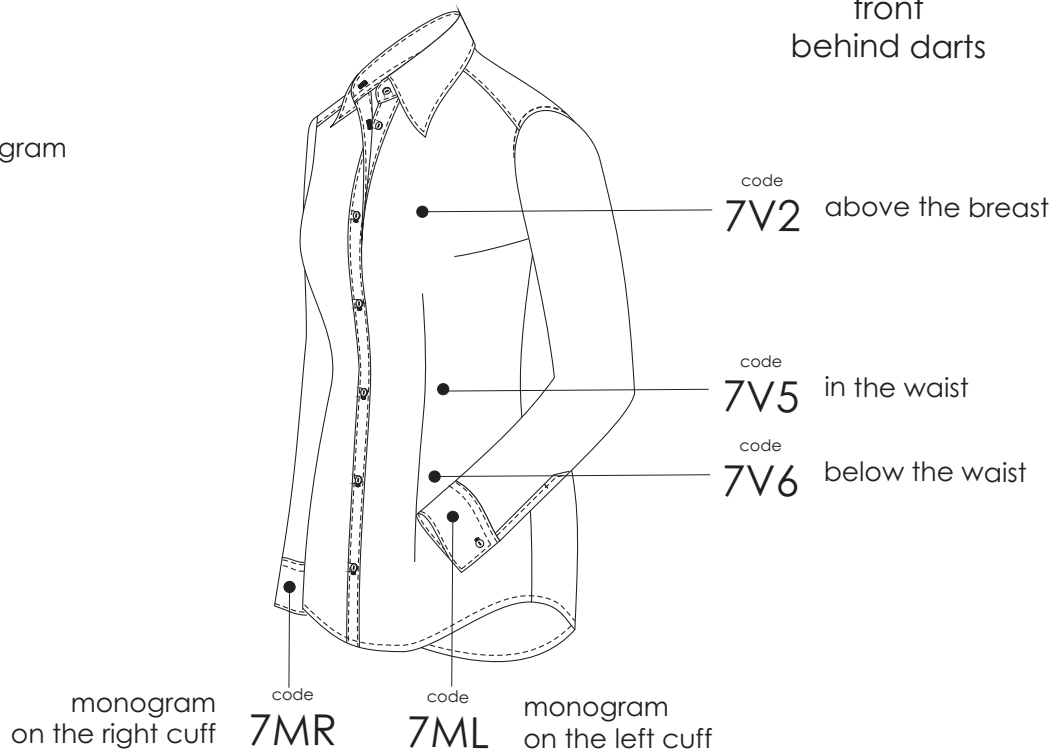


code
6O1

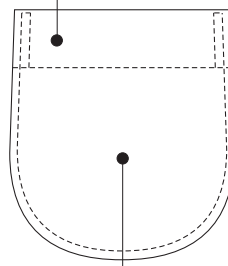
single cuff, straight,
1 button
cuff height 25 mm

code
7A
without monogram

Monogram on the
front
behind darts



code
7T1
monogram on the pocket top



code
7T2
monogram on the middle of pocket



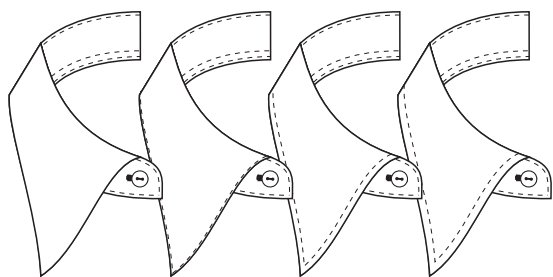
Block font



Script font

Choice of colours available
or tone on tone

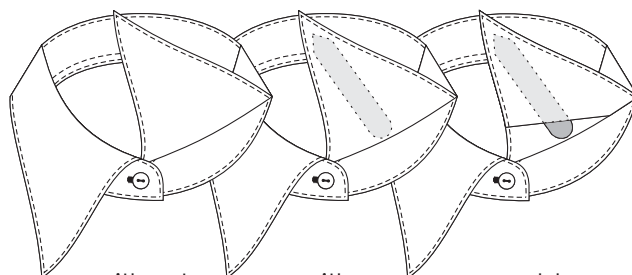
Collar and cuff stitching



code code code code
8A **8B1** **8B5** **8B7**

without stitching stitching stitching
 stitching 1 mm 5 mm 7 mm

Collar bones



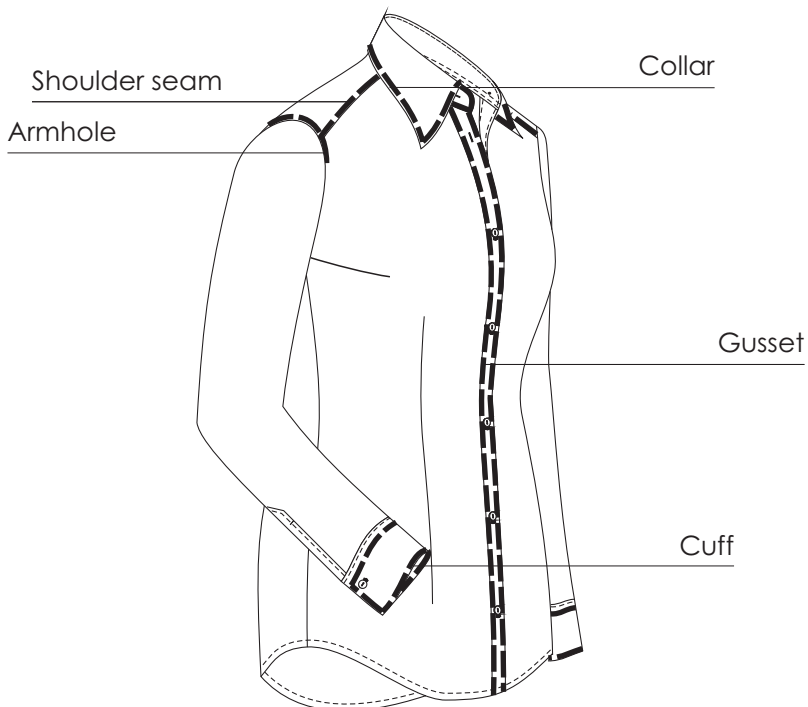
without with removable
 bones bones bones

Fusing / Interlining

You can choose one of four degrees of the cuff and collar fusing:
 EXTRA SOFT / SOFT / NORMAL / HARD

Contrast stitching *

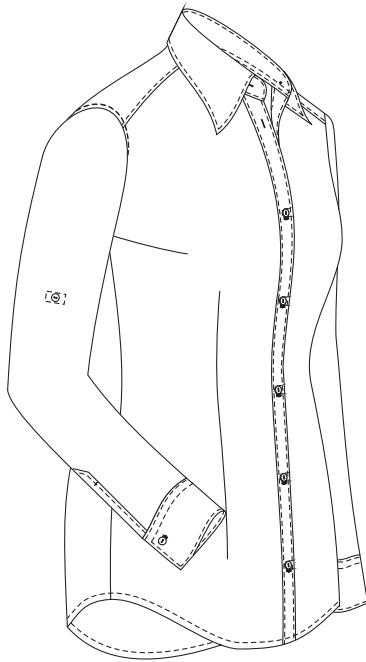
Choosing this option, we will apply contrast stitching on all marked seams.



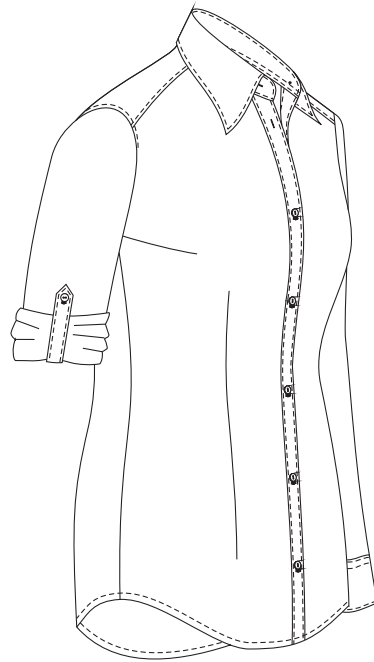
Option code

STA *

Sleeve tie back



wearing
long sleeve

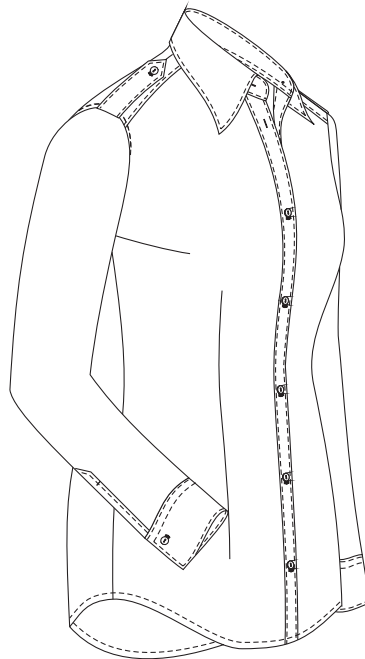


wearing
short sleeve

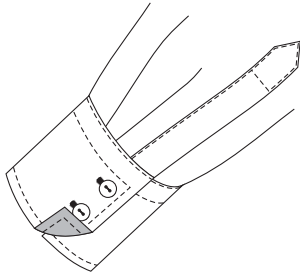
Option code

EPA *

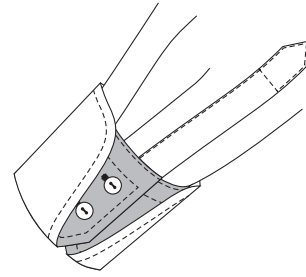
Epaulet



Contrast inside cuff *

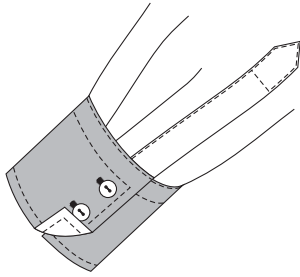


single cuff

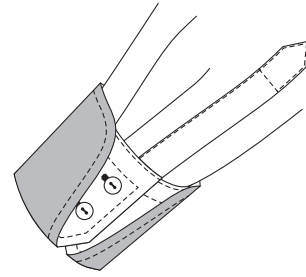


double cuff

Contrast outside cuff *

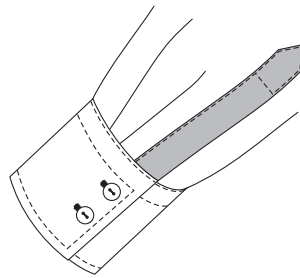


single cuff



double cuff

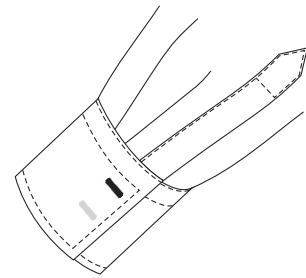
Contrast sleeve vent *



Contrast button hole stitching



all button holes *

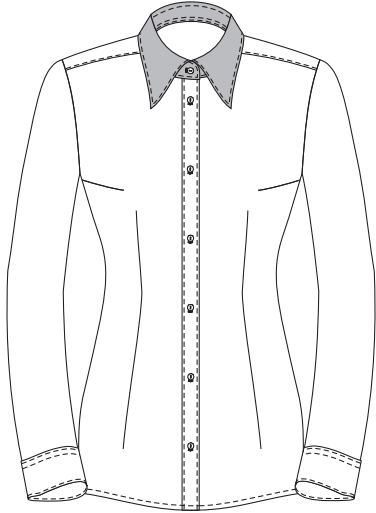


cuff button holes only *

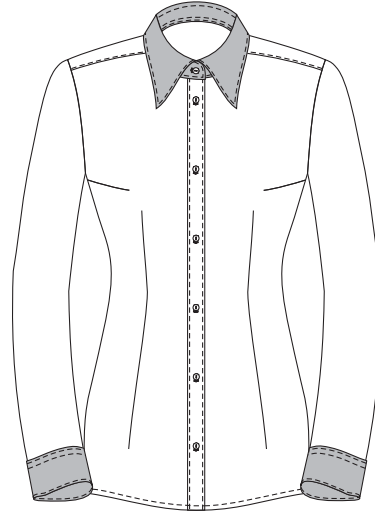
Contrast button stitching *



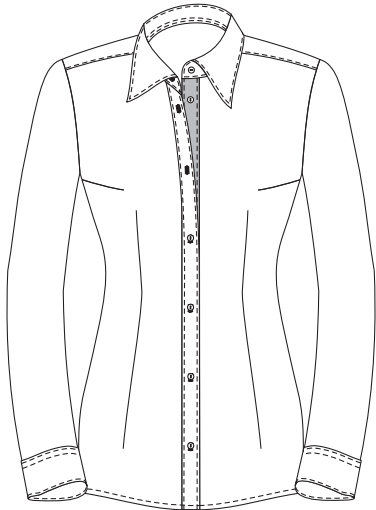
Contrast collar *



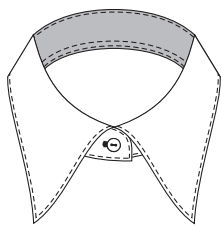
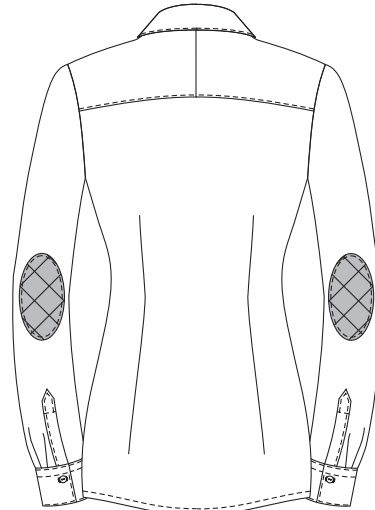
Contrast collar and cuffs *



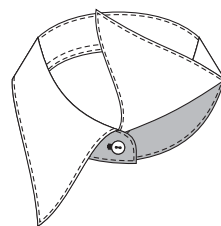
Contrast gusset button side *



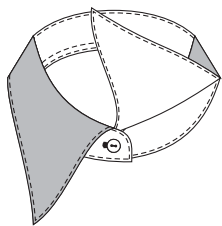
sleeve patches *
always applied diagonal



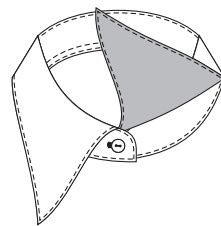
Contrast inside collar stand *



Contrast outside collar stand *



Contrast top collar outside *



Contrast top collar inside *