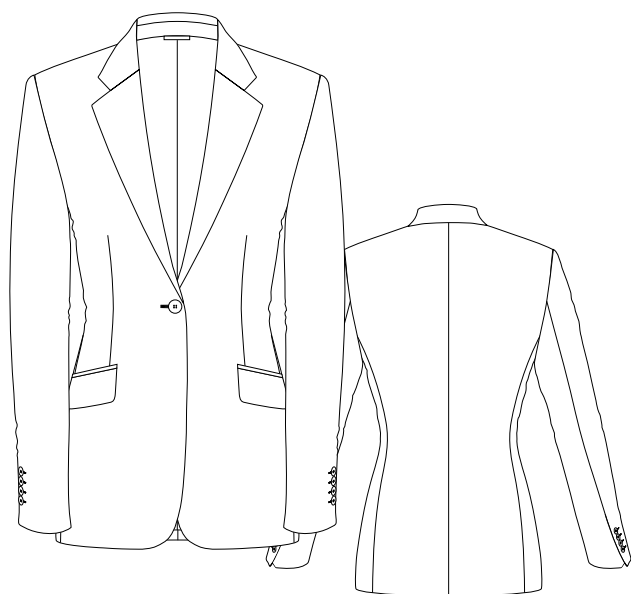
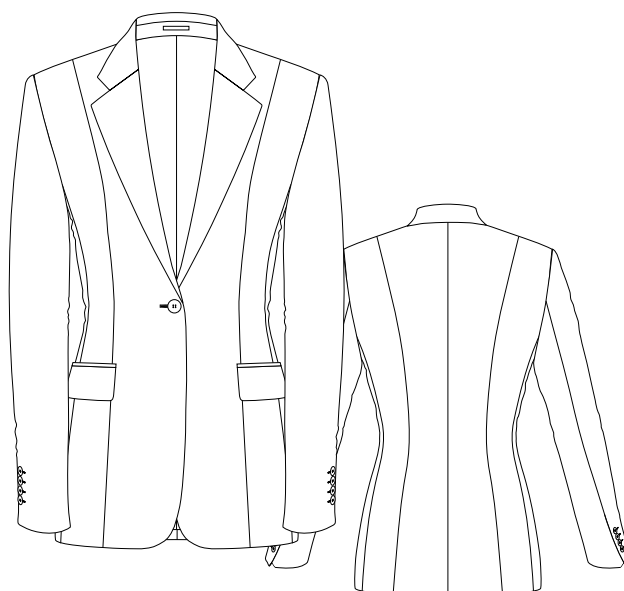


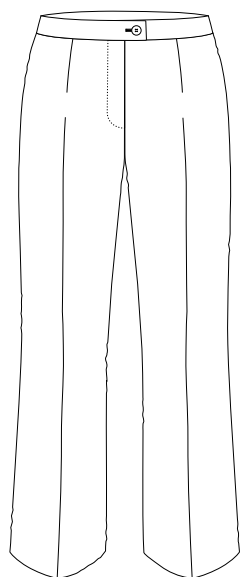
# PRODUCT GROUP - MODEL



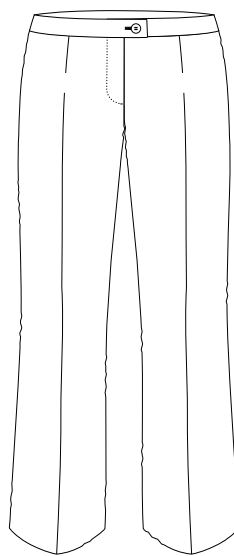
Models FEMME



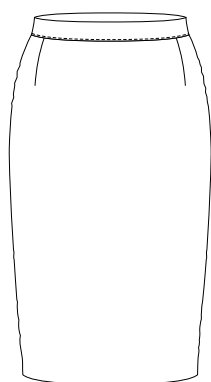
Models MADAME



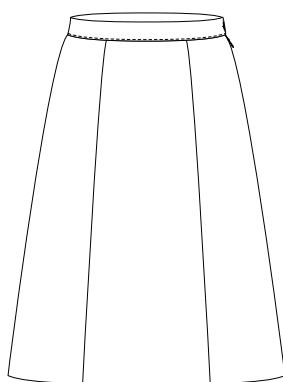
Models FEMME



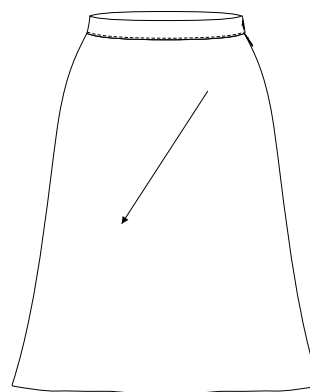
Models CHIC



Models FEMME



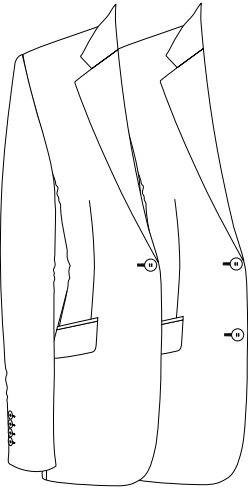
Models GRACE



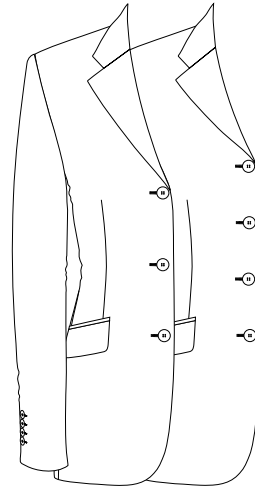
Models BELLA

# JACKET - TYPE

Code **A01**  
single breasted,  
1 button  
(normal closed)

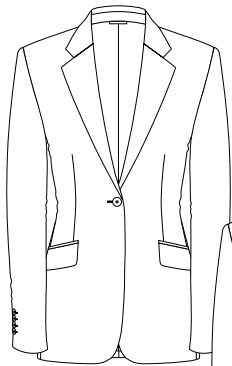


Code **A03**  
single breasted,  
2 buttons  
(normal closed)

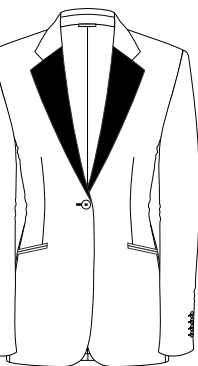


Code **A05**  
single breasted,  
3 buttons

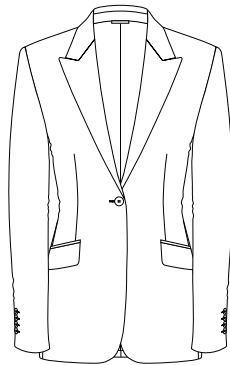
Code **A06**  
single breasted,  
4 buttons



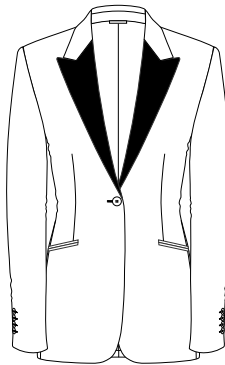
Variant **Axx01**  
notch lapel  
classic



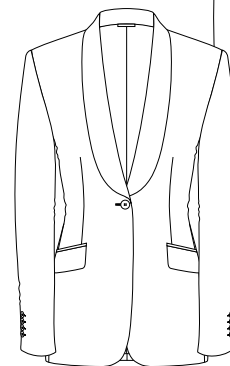
Variant **Axx03**  
notch lapel  
classic  
contrast



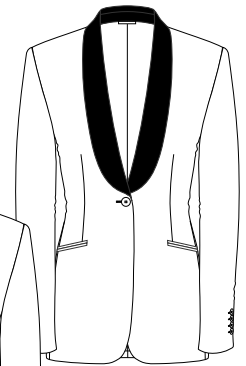
Variant **Axx04**  
peak lapel  
classic



Variant **Axx06**  
peak lapel  
classic  
contrast

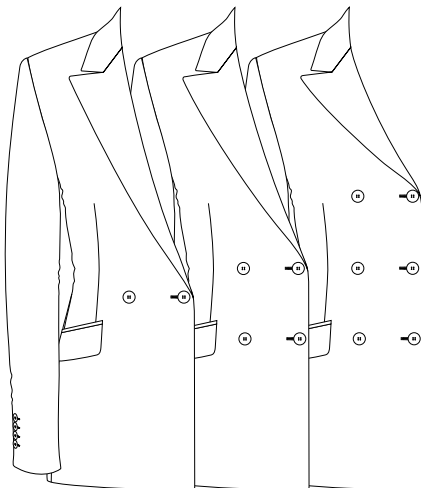


Variant **Axx07**  
shawl collar



Variant **Axx08**  
shawl collar  
contrast

Code **A07**  
double-breasted,  
1 closing button



Code **A09**  
double-breasted,  
3 closing buttons



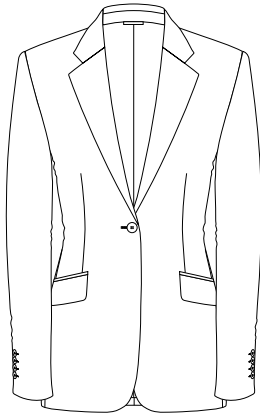
Variant **Axx06**  
peak lapel  
classic  
contrast

Code **A08**  
double-breasted,  
2 closing buttons

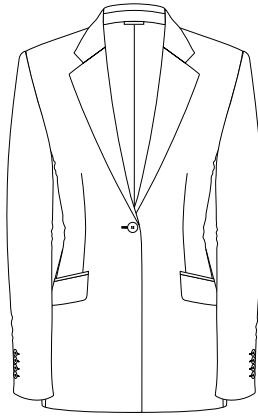
Variant **Axx04**  
peak lapel  
classic

For lower closing you can use  
codes A02, A04 (lower 4,5 cm)

# JACKET FRONT/BOTTOM



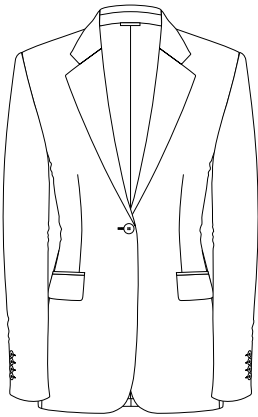
Code **C02**  
front/bottom round



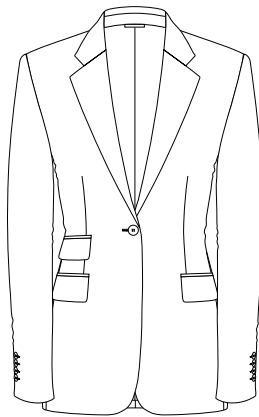
Code **C01**  
front/bottom squared

(not available  
for double-breasted)

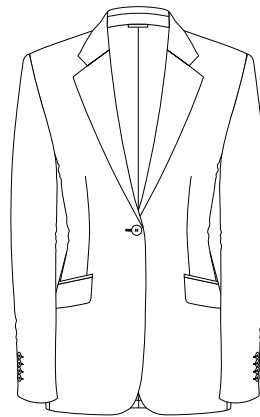
# JACKET - POCKETS



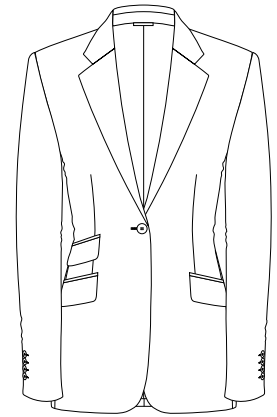
Code **D01**  
flap side pockets



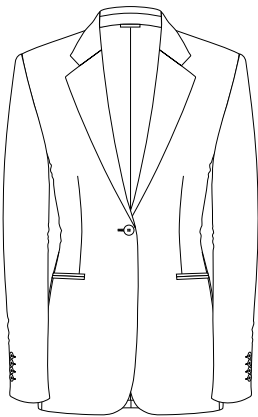
Code **D02**  
flap side pockets,  
ticket pocket



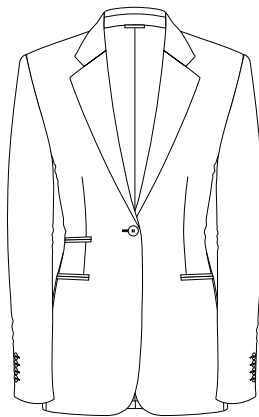
Code **D03**  
slant flap side pockets



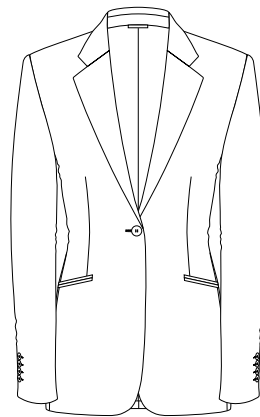
Code **D04**  
slant flap side pockets,  
ticket pocket



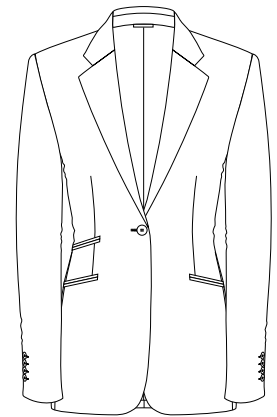
Code **D05**  
jettted side pockets



Code **D06**  
jettted side pockets,  
ticket pocket

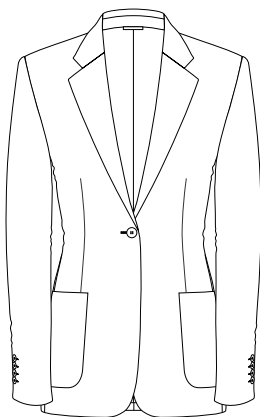


Code **D07**  
slant jettted side pockets

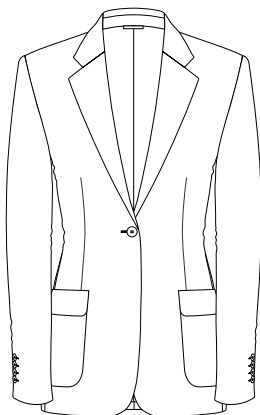


Code **D08**  
slant jettted side  
pockets,  
ticket pocket

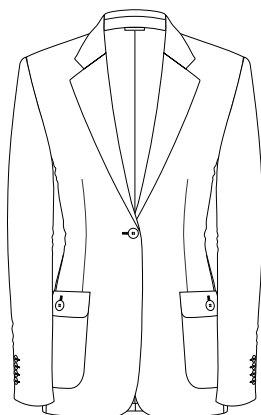
# JACKET - POCKETS



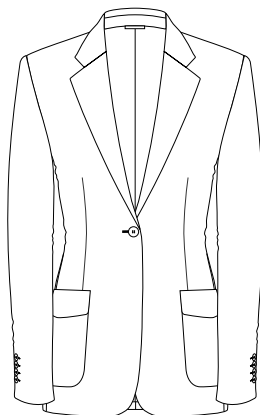
Code **D09**  
side patch pockets



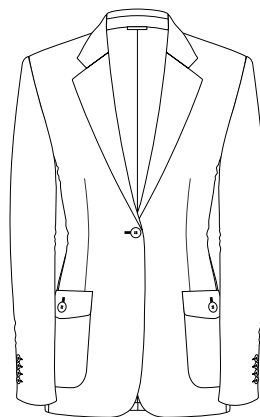
Code **D10**  
Side patch pockets  
with flap



Code **D11**  
Side patch pockets  
with flap and large  
button

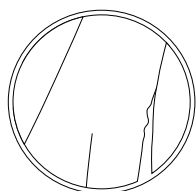


Code **D12**  
Side patch pockets  
with shaped flap

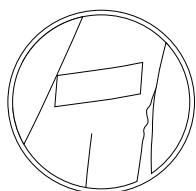


Code **D13**  
Side patch pockets  
with shaped flap and  
large button

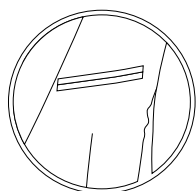
# JACKET - POCKETS Variants



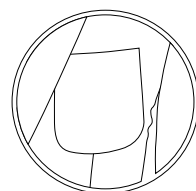
Variant **Dxx00**  
without breast  
pocket



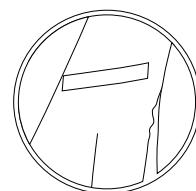
Variant **Dxx01**  
welt breast  
pocket



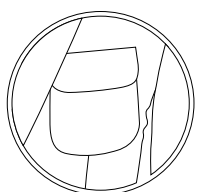
Variant **Dxx02**  
jetted breast  
pocket



Variant **Dxx03**  
patch breast  
pocket

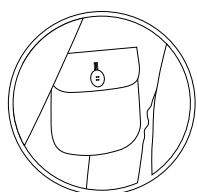


Variant **Dxx04**  
breast pocket  
- welted, 1,5  
cmt



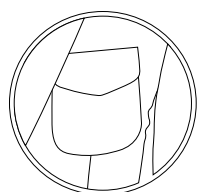
Variant **D10 06**  
Breast patch pocket  
with flap

Variant **D10 07**  
Breast patch pockets  
with flap-both



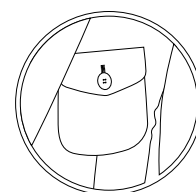
Variant **D11 08**  
Breast patch pocket  
with flap and small  
button

Variant **D11 09**  
breast patch pockets  
with flap and small  
button-both



Variant **D12 10**  
Breast patch pocket  
with shaped flap

Variant **D12 11**  
Breast patch pockets  
with shaped flap - both

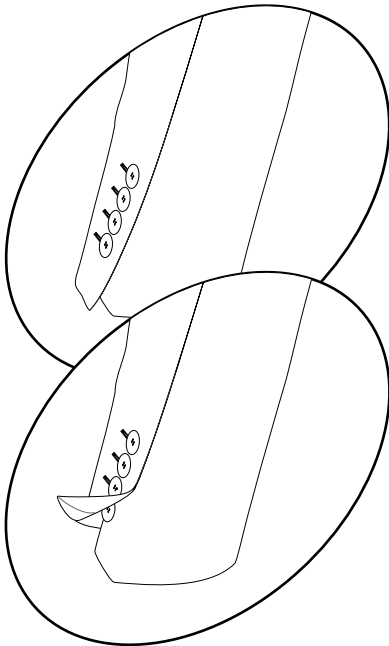


Variant **D13 12**  
Breast patch pocket  
with shaped flap and  
small button

Variant **D13 13**  
Breast patch pockets  
with shaped flap and  
small button-both

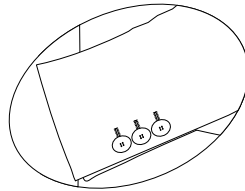
# JACKET - SLEEVES

Code **F01**  
sham cuff

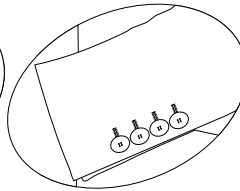


Code **F02**  
real button holes

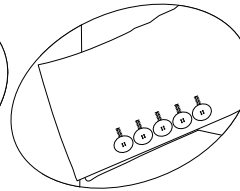
Variant **Fxx00**  
3 buttons



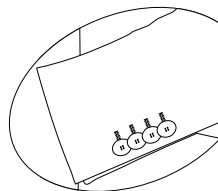
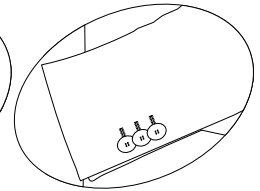
Variant **Fxx01**  
4 buttons



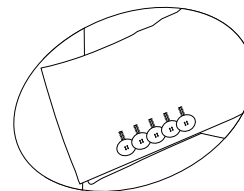
Variant **Fxx02**  
5 buttons



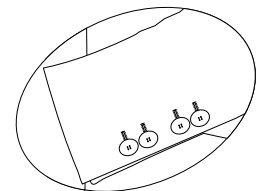
Variant **Fxx03**  
3 kissing  
buttons



Variant **Fxx04**  
4 kissing  
buttons

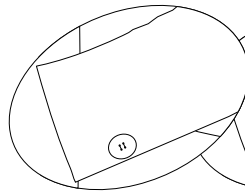


Variant **Fxx05**  
5 kissing  
buttons

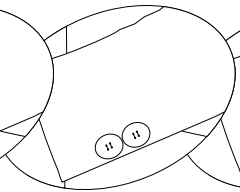


Variant **Fxx06**  
2+2 buttons  
with distance

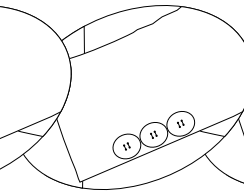
Variant **F0300**  
1 big  
button



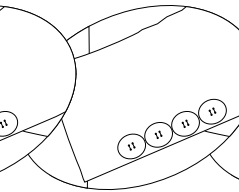
Variant **F0301**  
2 big  
buttons



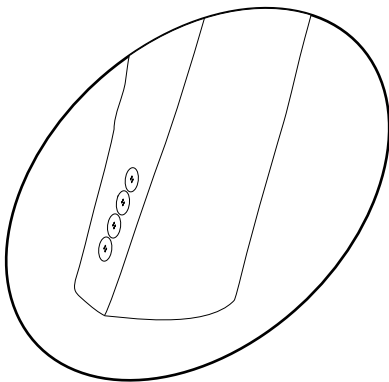
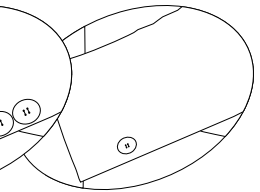
Variant **F0302**  
3 big  
buttons



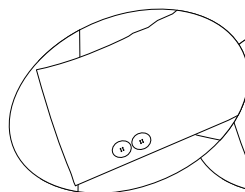
Variant **F0303**  
4 big  
buttons



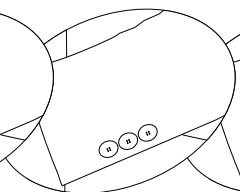
Variant **F0304**  
1 small  
button



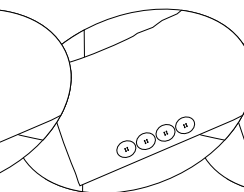
Code **F03**  
without cuff



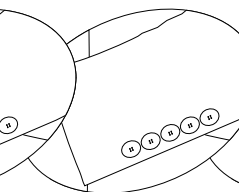
Variant **F0305**  
2 small  
buttons



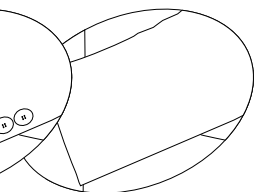
Variant **F0306**  
3 small  
buttons



Variant **F0307**  
4 small  
buttons

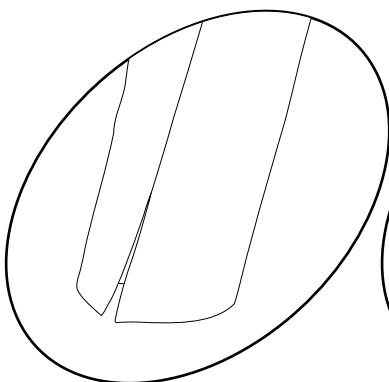


Variant **F0308**  
5 small  
buttons

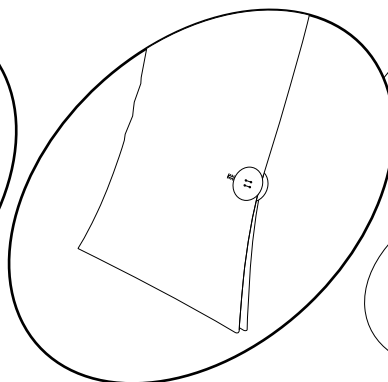


Variant **F0309**  
without  
buttons -  
holes

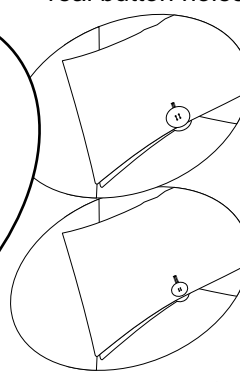
Code **F04**  
Touch-squared cuff



Code **F05**  
Touch-flaired cuff

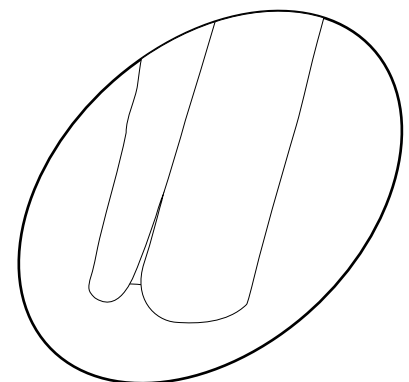


Variant **F0500**  
Big buttons - 2 opposite,  
real button holes

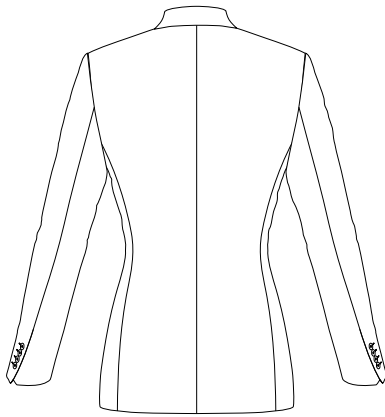


Variant **F0501**  
Small buttons - 2  
opposite, real button  
holes

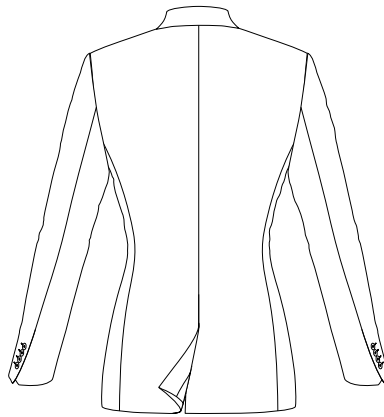
Code **F06**  
Touch-round cuff



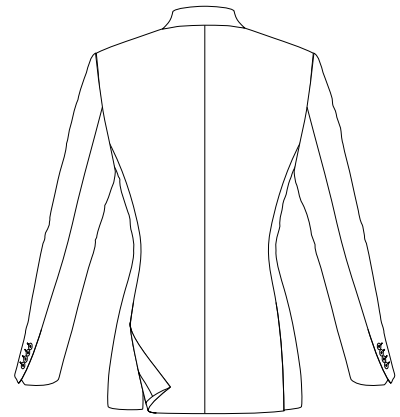
# JACKET - BACK



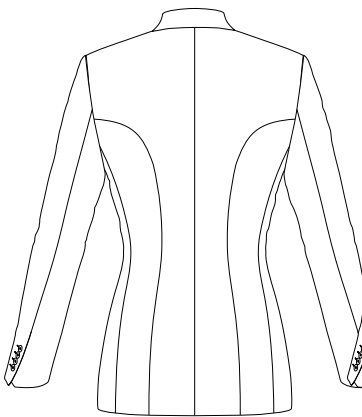
Code **E01**  
normal, plain back



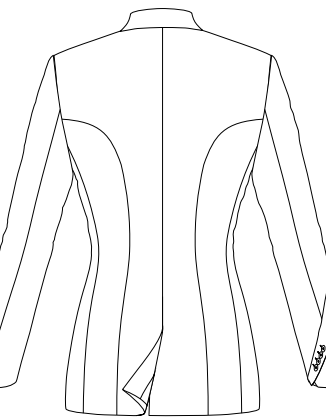
Code **E02**  
normal, centre vent



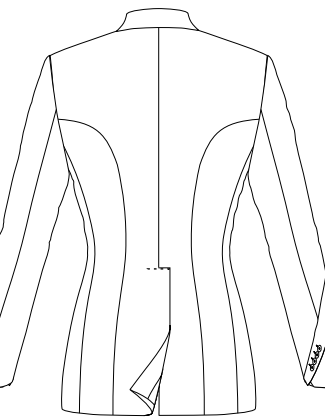
Code **E03**  
normal, side vents



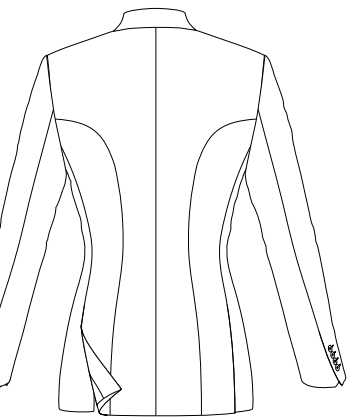
Code **E04**  
princess shaped back,  
no vent  
(riding jacket)



Code **E05**  
princess shaped back,  
centre vent  
(riding jacket)

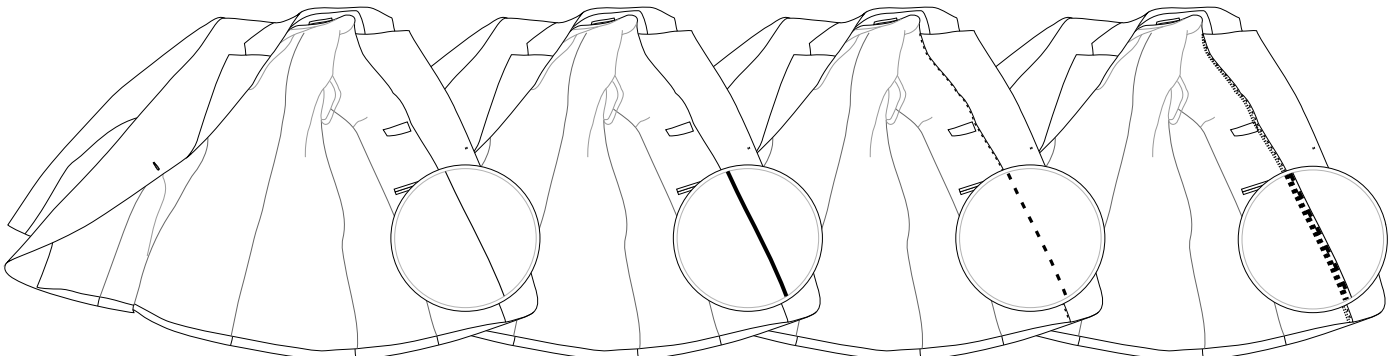


Code **E06**  
princess shaped back,  
backstep centre vent  
(riding jacket)



Code **E07**  
princess shaped back,  
side vents  
(riding jacket)

# JACKET - INSIDE



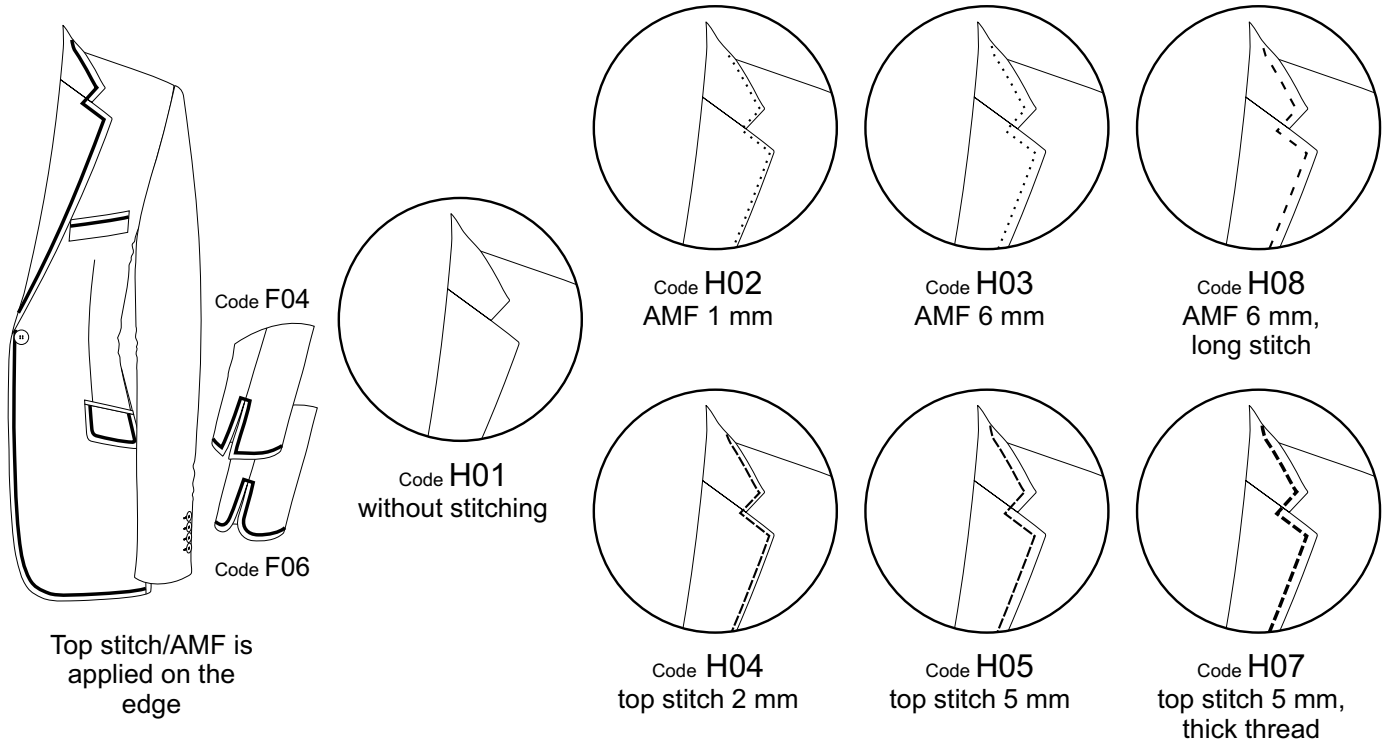
Code **G01**  
straight facing,  
in breast pocket left

Code **G02**  
straight facing,  
seam lace (beading),  
in breast pocket left

Code **G03**  
straight facing,  
Columbia,  
in breast pocket  
left

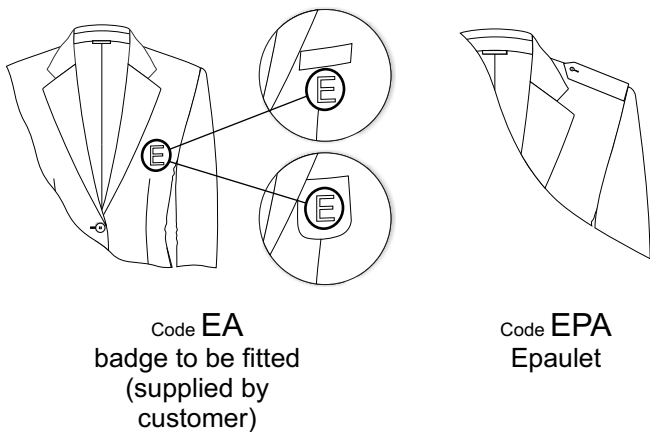
Code **G04**  
straight facing,  
lace,  
in breast pocket  
left

# JACKET - STITCHING



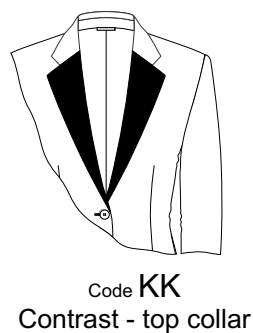
# JACKET - EXTRA OPTIONS

## STYLE OPTIONS



- 1TB - 2 inside pockets, left and right
- RS - Ride jacket - last button higher 1,5 cm
- FO - front without buttonholes
- AOO - sleeves without buttonholes and buttons
- AOM - sleeves without buttonholes and buttons on
- LR - Buttonhole - left lapel
- RR - Buttonhole - right lapel
- BR - Buttonhole - both lapels
- SV - Special embroidery  
(Description and pict.give to Bernhardt)

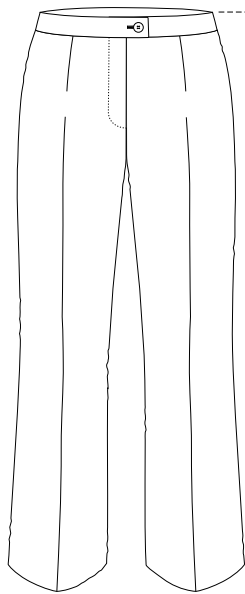
## MATERIAL OPTIONS



- Leather elbow patches
- Contrast jettings inside pockets
- Contrast edge button holes
- Contrast lapel button hole
- Contrast sleeve 1st button hole
- Contrast sleeve 2nd button hole
- Contrast sleeve all button holes

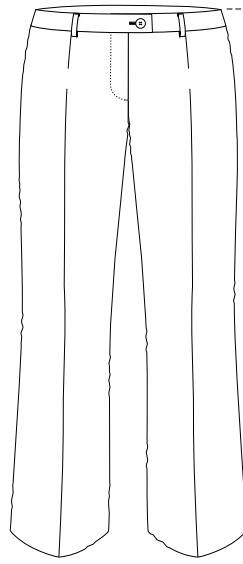
# TROUSERS - MODEL

Model **FEMME**  
normal seat,  
shaped waisband 4 cm



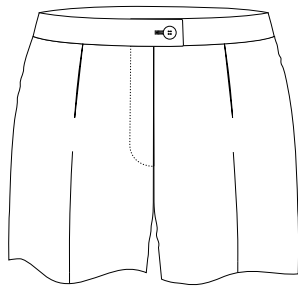
4 cm

Model **CHIC**  
lower seat,  
shaped waisband 3 cm

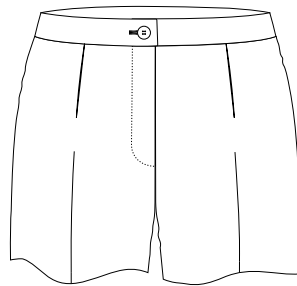


# TROUSERS WAISTBAND

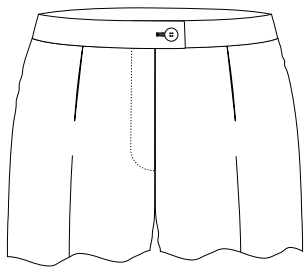
Code **A1**  
waistband  
with extension



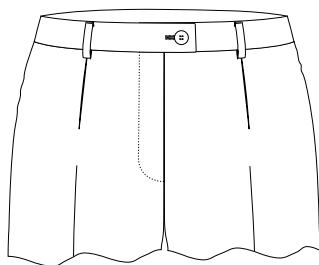
Code **A2**  
waistband  
without extension



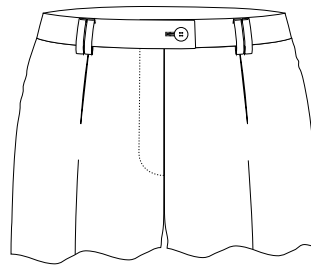
# TROUSERS - WAISTBAND Variants



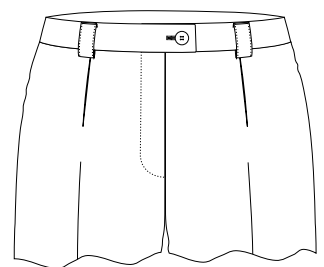
Code **Ax01**  
without belt  
loops



Code **Ax02**  
6 belt loops



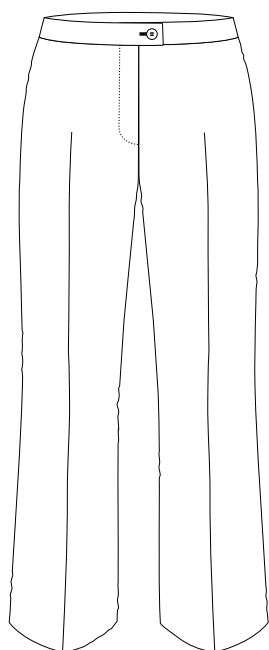
Code **Ax03**  
6 double belt  
loops



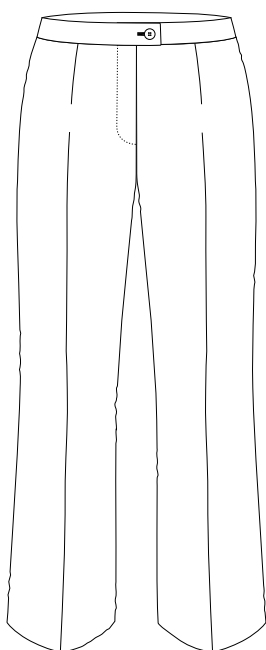
Code **Ax04**  
6 wide belt  
loops



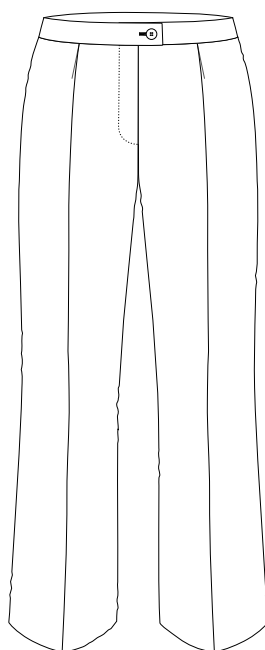
# TROUSERS - BASIC STYLES



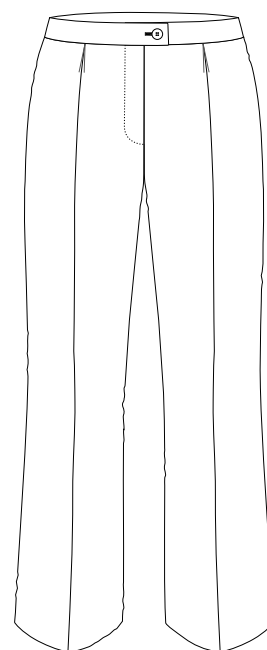
Code **B01**  
plain front  
without dartseam



Code **B02**  
plain front  
with dartseam

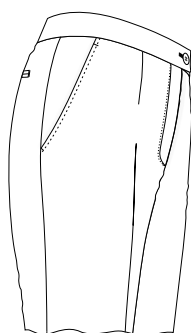


Code **B03**  
1 reverse pleat

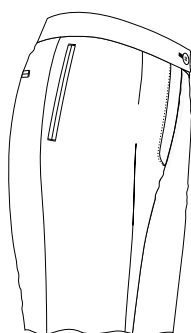


Code **B04**  
box pleat

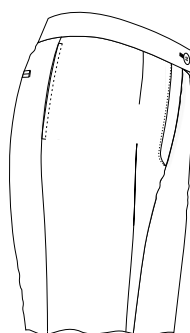
# TROUSERS - FRONT POCKETS



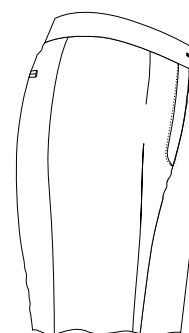
Code **C01**  
slant side pockets



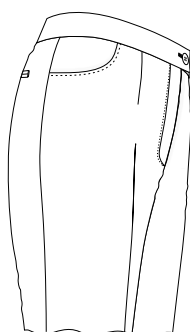
Code **C02**  
jetted pockets



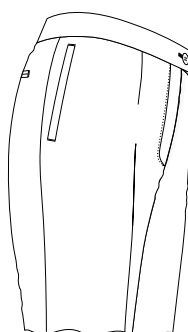
Code **C03**  
straight side pockets



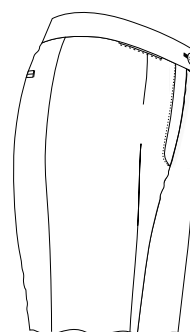
Code **C04**  
without pockets



Code **C05**  
round pockets



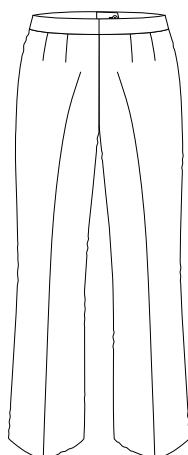
Code **C06**  
welted pockets 1 cm



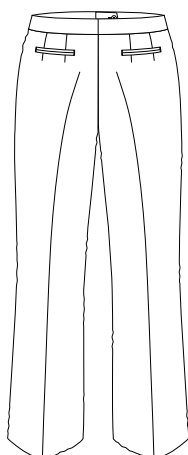
Code **C07**  
watch pocket 9 cm

you can choose  
Code **C0701** left  
Code **C0702** right  
Code **C0703** both

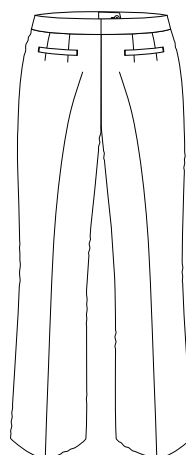
# TROUSERS - HIP POCKETS



Code **D01**  
without pockets



Code **D02**  
jetted pockets



Code **D03**  
welted pockets

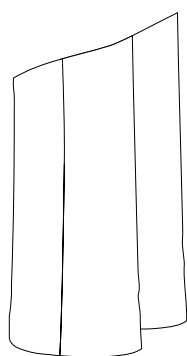
all of them you can choose

Code **DB** both

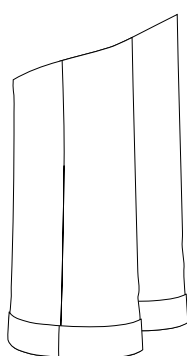
Code **DL** left

Code **DR** right

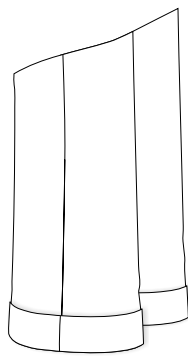
# TROUSERS - BOTTOM OPTIONS



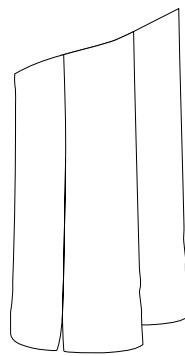
Code **E01**  
plain bottom,  
inlay 5 cm



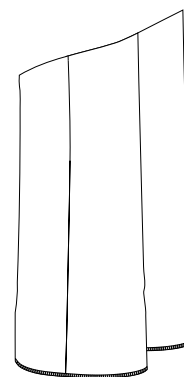
Code **E02**  
turn up 4 cm



Code **E03**  
turn up 5 cm



Code **E04**  
vent 4 cm in  
side seam



all of them you can choose

Code **EF** finished bottom

Code **EO** unfinished bottom

# TROUSERS - INSIDE FITTING

- F01 - with knee linig
- F02 - without knee linig
- F03 - Fully Lined Trouser (Allergic)

# TROUSERS - EXTRA FEATURES

## STYLE OPTIONS

- HH - Hook instead of button
- OB - No front and back crease

## MATERIAL OPTIONS

Dinner suit  
trousers, single silk  
side seam

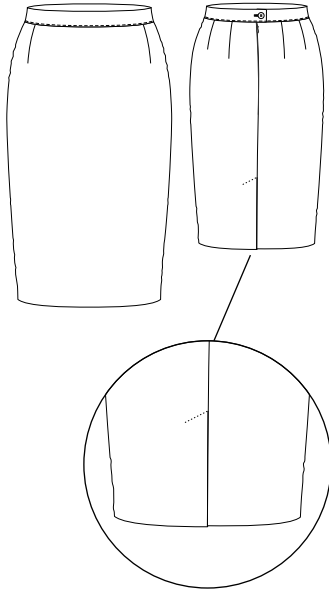


# SKIRT - MODEL

## FEMME

Code **FA01**

Straight, front - plain, back - centre seam



Variant

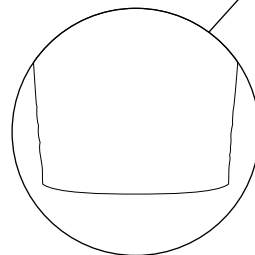
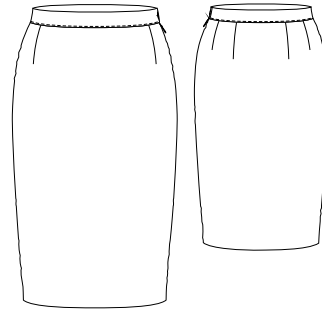
**01**

covered vent -  
centre back

## FEMME

Code **FA02**

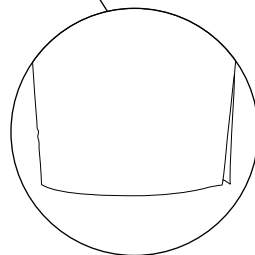
Straight, front - plain, back - plain



Variant

**00**

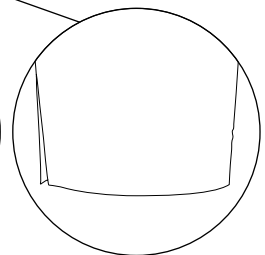
without vent



Variant

**03**

side vent - left  
seam



Variant

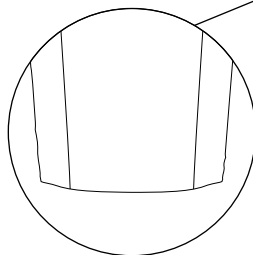
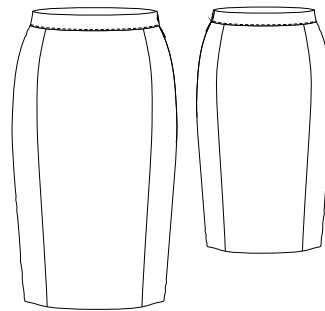
**04**

side vent - right  
seam

## FEMME

Code **FA03**

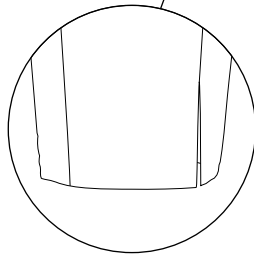
Straight, front - 2 vertical seams, back - 2 vertical seams



Variant

**00**

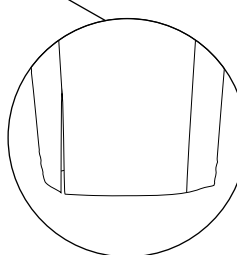
without vent



Variant

**05**

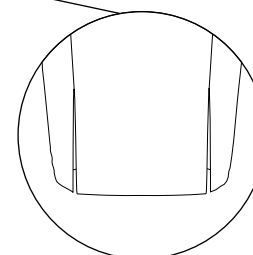
side vent left  
vertical front seams



Variant

**06**

side vent right  
vertical front seams



Variant

**07**

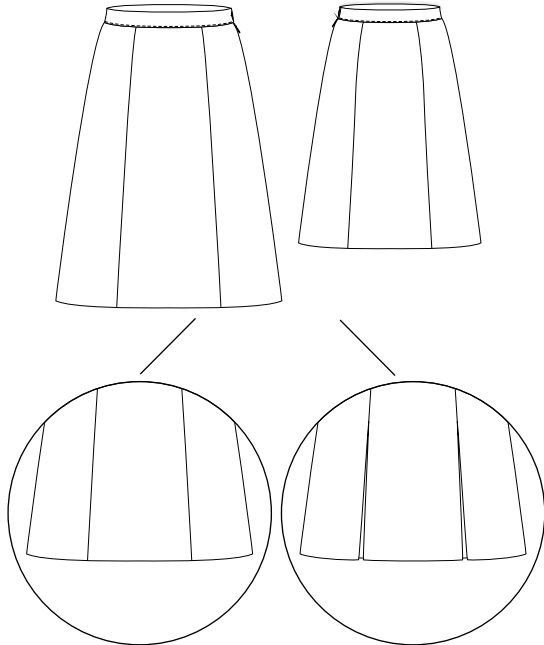
vents both sides  
vertical front  
seams

# SKIRT - MODEL

## GRACE

Code **GA01**

Flared skirt, front 2 vertical seams,  
back - 2 vertical seams



Variant  
**00**

without boxpleats

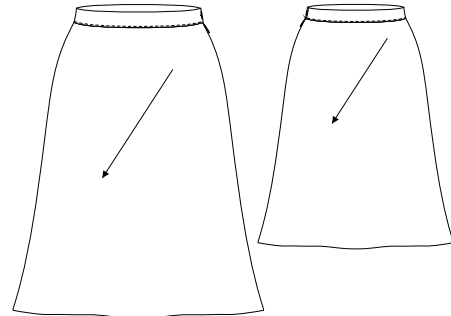
Variant  
**12**

box pleats on the  
vertical seams

## BELLA

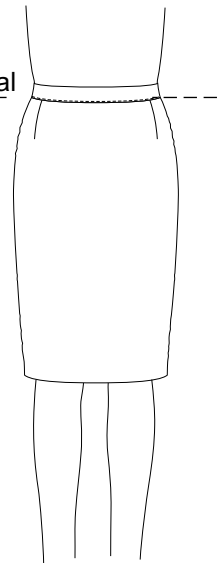
Code **BA01**

Flared skirt, bias cut, front plain, back plain

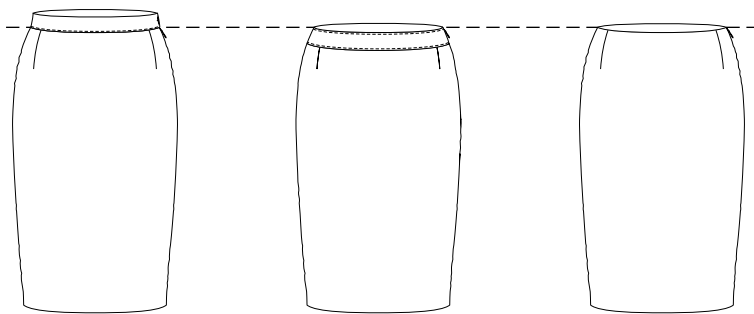


# SKIRT - TYPE

Code **B01** waistposition - normal



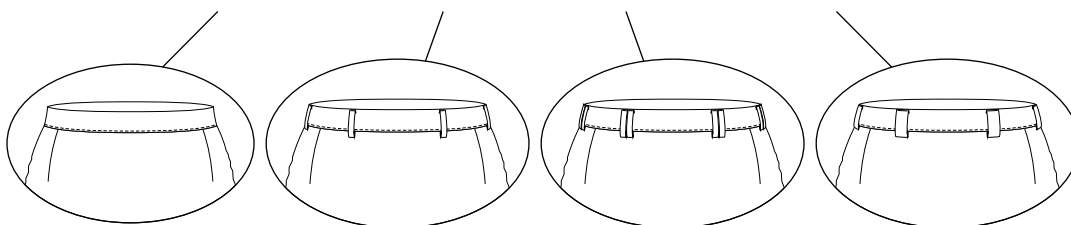
# SKIRT - WAISTBAND



Code **C01**  
straight waistband  
3cm, with extension

Code **C02**  
shaped waistband  
4cm, with extension

Code **C03**  
without waistband



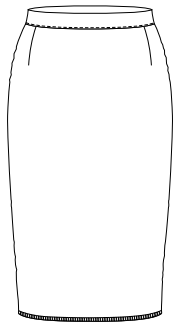
Variant  
**00**  
without loops

Variant  
**01**  
normal loops

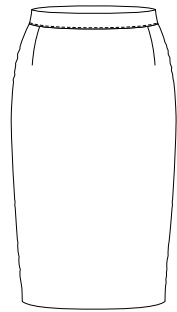
Variant  
**02**  
double belt loops

Variant  
**03**  
wide belt loops

# SKIRT - BOTTOM



Code **F01**  
Unfinished bottom



Code **F02**  
Finished bottom

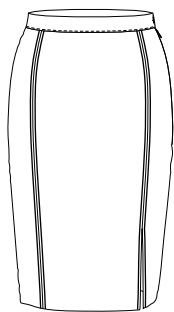
# SKIRT - INSIDE FITTING

- G01 - with lining
- G02 - without lining

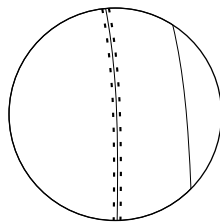
# SKIRT EXTRA OPTIONS

## STYLE OPTIONS

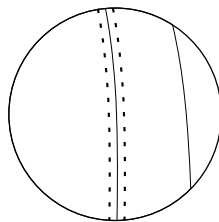
### SKIRT - VERTICAL FRONT AND BACK SEAM'S STITCHING



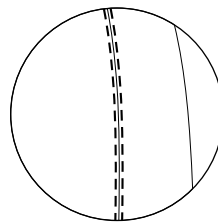
Only stitching and AMF is available on vertical seams



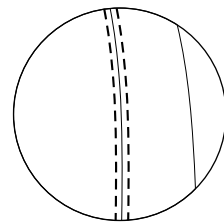
Code **H02**  
AMF 1 mm



Code **H03**  
AMF 6 mm



Code **H04**  
top stitch 2 mm



Code **H05**  
top stitch 5 mm

HH - Hook instead of button on waistband extension