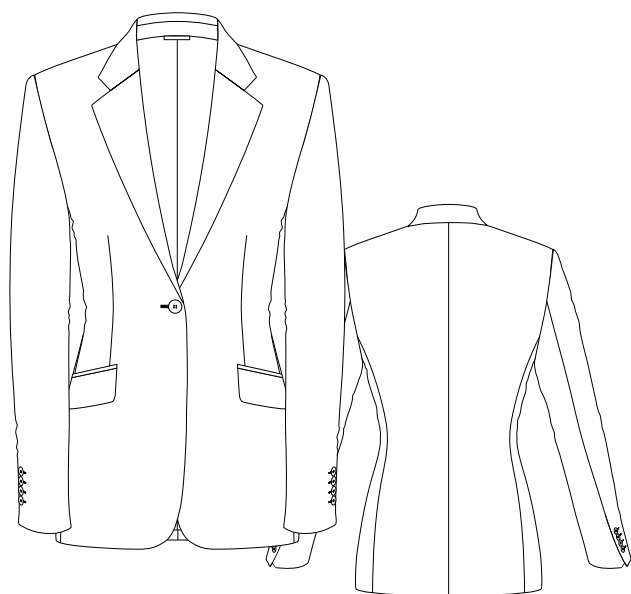
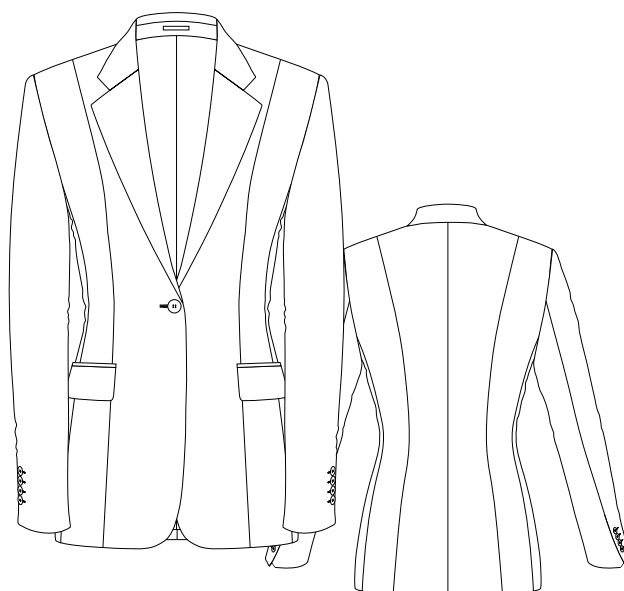


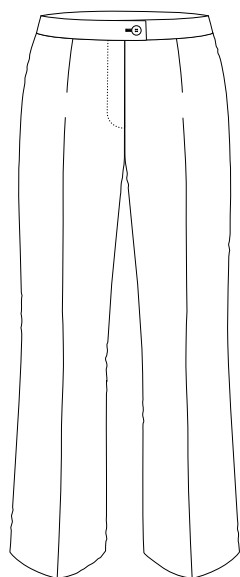
PRODUCT GROUP - MODEL



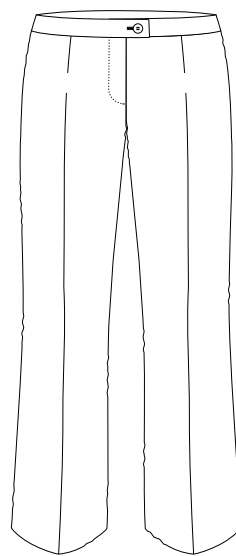
Models **FEMME**



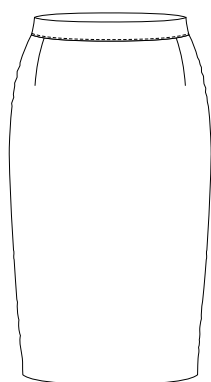
Models **MADAME**



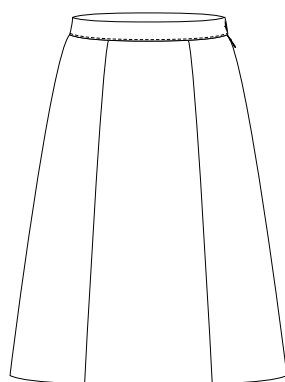
Models **FEMME**



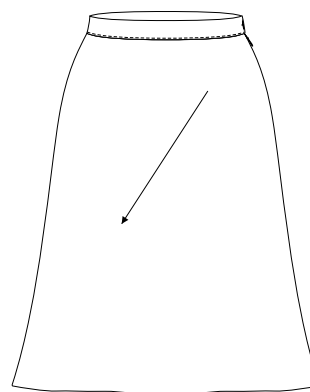
Models **CHIC**



Models **FEMME**



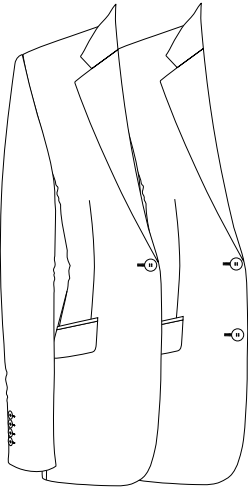
Models **GRACE**



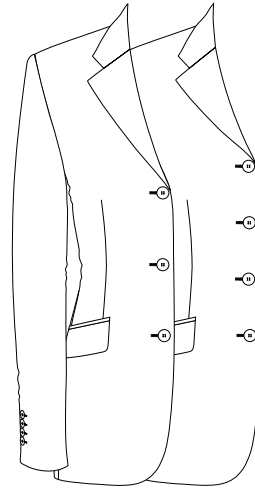
Models **BELLA**

JACKET - TYPE

Code **A01**
single breasted,
1 button
(normal closed)

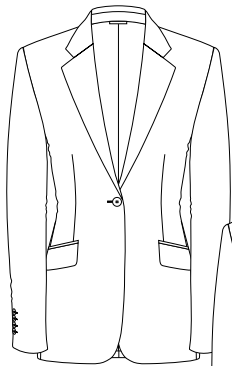


Code **A03**
single breasted,
2 buttons
(normal closed)

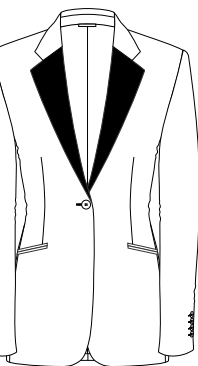


Code **A05**
single breasted,
3 buttons

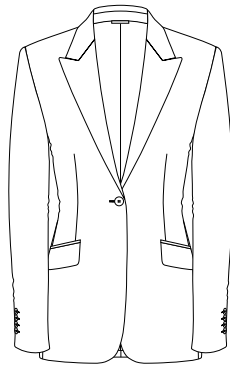
Code **A06**
single breasted,
4 buttons



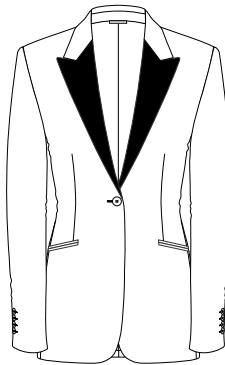
Variant **Axx01**
notch lapel
classic



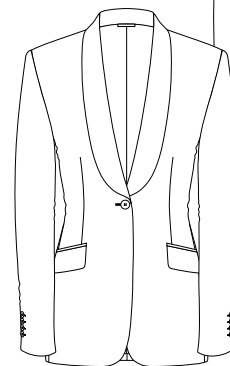
Variant **Axx03**
notch lapel
classic
contrast



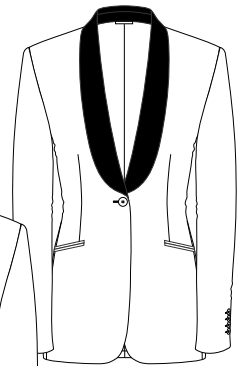
Variant **Axx04**
peak lapel
classic



Variant **Axx06**
peak lapel
classic
contrast

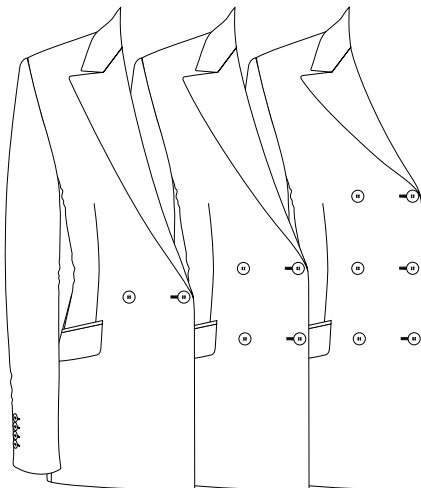


Variant **Axx07**
shawl collar



Variant **Axx08**
shawl collar
contrast

Code **A07**
double-breasted,
1 closing button



Code **A09**
double-breasted,
3 closing buttons



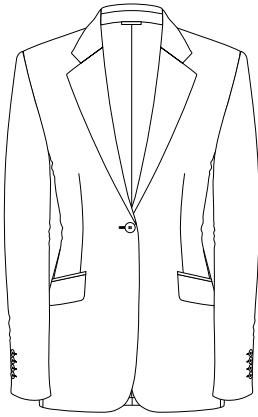
Variant **Axx06**
peak lapel
classic
contrast

Code **A08**
double-breasted,
2 closing buttons

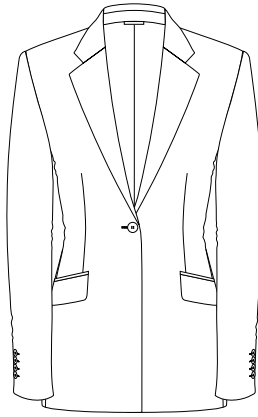
Variant **Axx04**
peak lapel
classic

For lower closing you can use
codes A02, A04 (lower 4,5 cm)

JACKET FRONT/BOTTOM



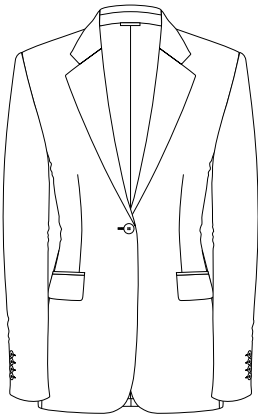
Code **C02**
front/bottom round



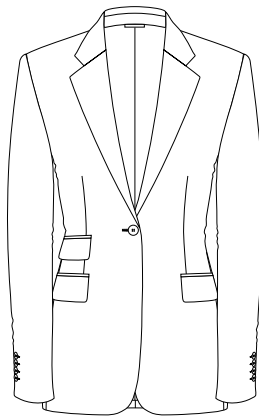
Code **C01**
front/bottom squared

(not available
for double-breasted)

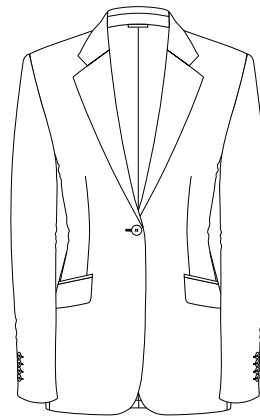
JACKET - POCKETS



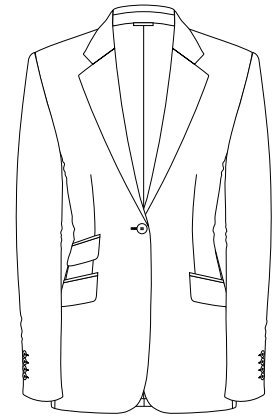
Code **D01**
flap side pockets



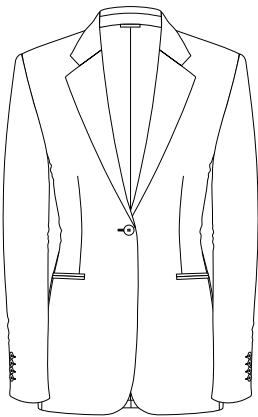
Code **D02**
flap side pockets,
ticket pocket



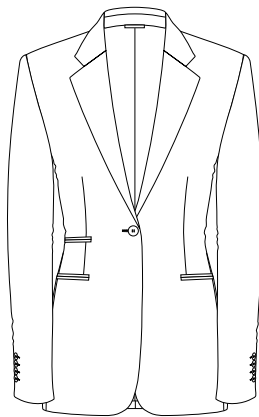
Code **D03**
slant flap side pockets



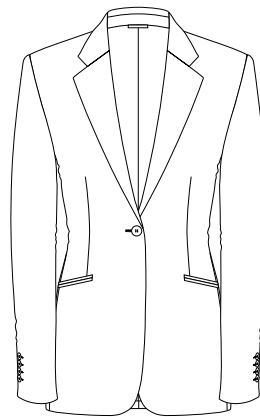
Code **D04**
slant flap side pockets,
ticket pocket



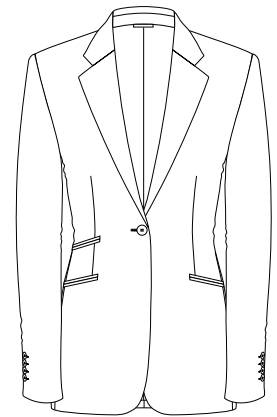
Code **D05**
jettted side pockets



Code **D06**
jettted side pockets,
ticket pocket

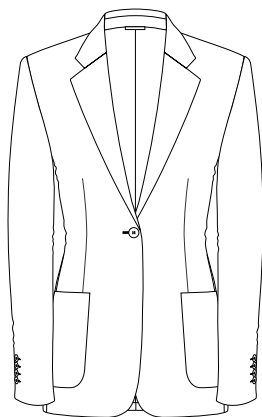


Code **D07**
slant jettted side pockets

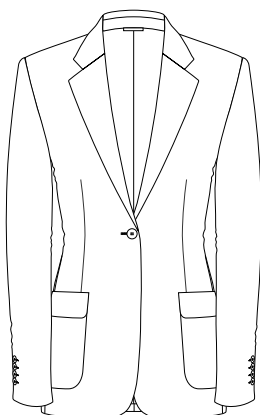


Code **D08**
slant jettted side
pockets,
ticket pocket

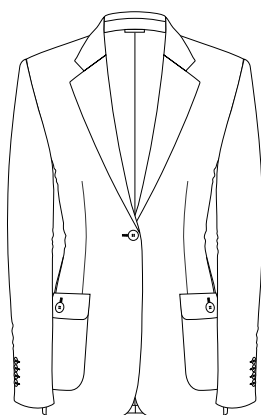
JACKET - POCKETS



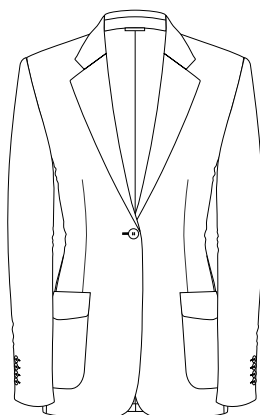
Code **D09**
side patch pockets



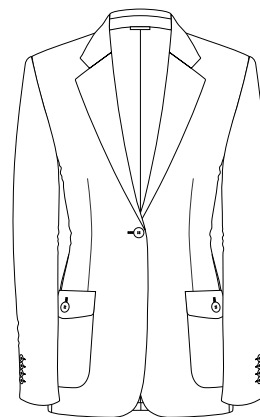
Code **D10**
Side patch pockets
with flap



Code **D11**
Side patch pockets
with flap and large
button

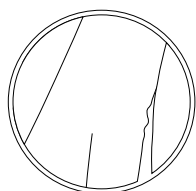


Code **D12**
Side patch pockets
with shaped flap

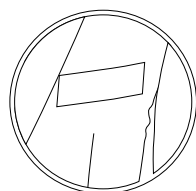


Code **D13**
Side patch pockets
with shaped flap and
large button

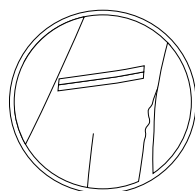
JACKET - POCKETS Variants



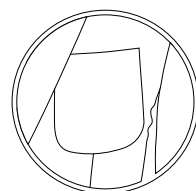
Variant **Dxx00**
without breast
pocket



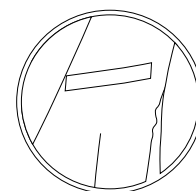
Variant **Dxx01**
welt breast
pocket



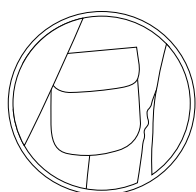
Variant **Dxx02**
jetted breast
pocket



Variant **Dxx03**
patch breast
pocket

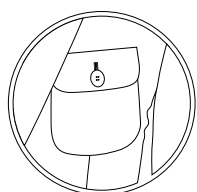


Variant **Dxx04**
breast pocket
- welted, 1,5
cmt



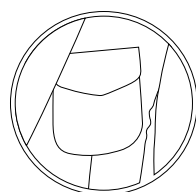
Variant **D10 06**
Breast patch pocket
with flap

Variant **D10 07**
Breast patch pockets
with flap-both



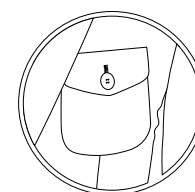
Variant **D11 08**
Breast patch pocket
with flap and small
button

Variant **D11 09**
breast patch pockets
with flap and small
button-both



Variant **D12 10**
Breast patch pocket
with shaped flap

Variant **D12 11**
Breast patch pockets
with shaped flap - both

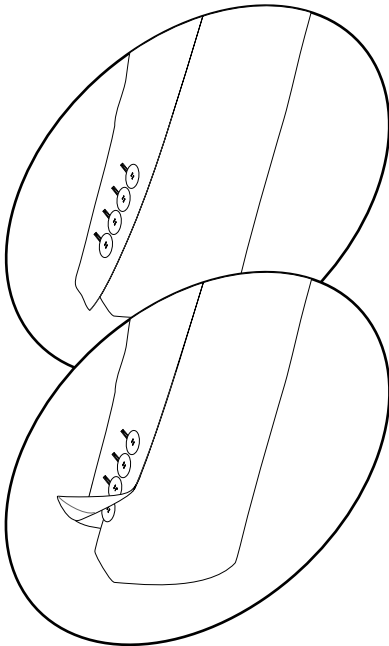


Variant **D13 12**
Breast patch pocket
with shaped flap and
small button

Variant **D13 13**
Breast patch pockets
with shaped flap and
small button-both

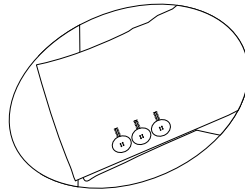
JACKET - SLEEVES

Code **F01**
sham cuff

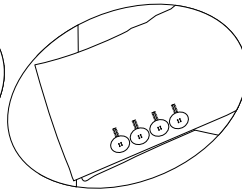


Code **F02**
real button holes

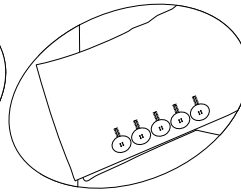
Variant **Fxx00**
3 buttons



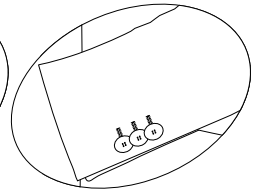
Variant **Fxx01**
4 buttons



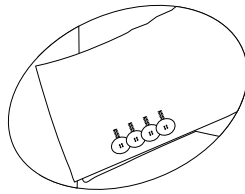
Variant **Fxx02**
5 buttons



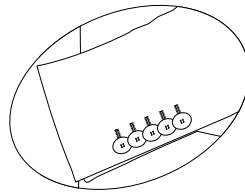
Variant **Fxx03**
3 kissing
buttons



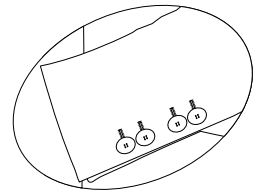
Variant **Fxx04**
4 kissing
buttons



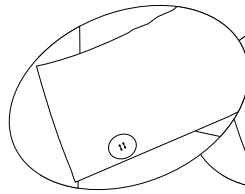
Variant **Fxx05**
5 kissing
buttons



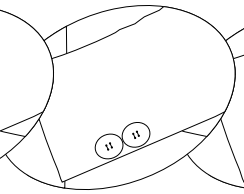
Variant **Fxx06**
2+2 buttons
with distance



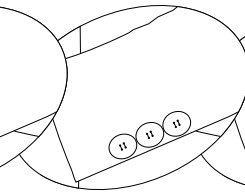
Variant **F0300**
1 big
button



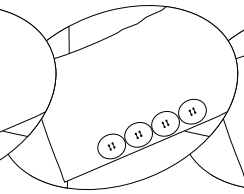
Variant **F0301**
2 big
buttons



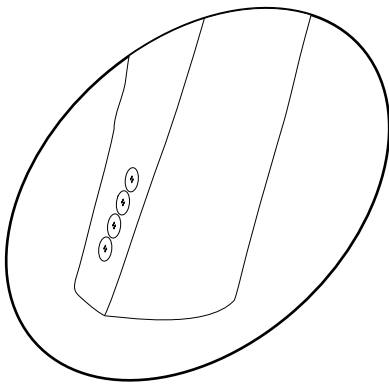
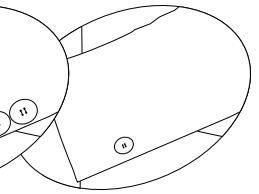
Variant **F0302**
3 big
buttons



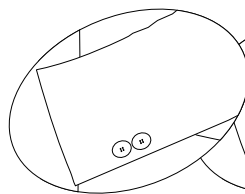
Variant **F0303**
4 big
buttons



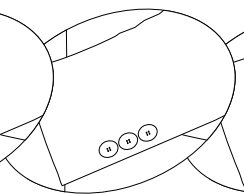
Variant **F0304**
1 small
button



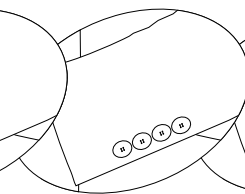
Code **F03**
without cuff



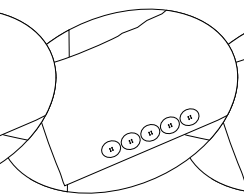
Variant **F0305**
2 small
buttons



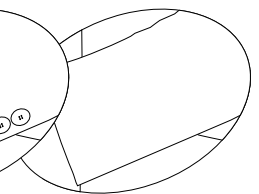
Variant **F0306**
3 small
buttons



Variant **F0307**
4 small
buttons

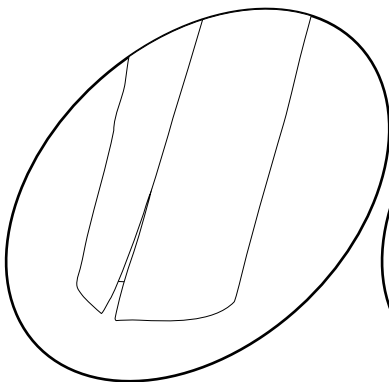


Variant **F0308**
5 small
buttons

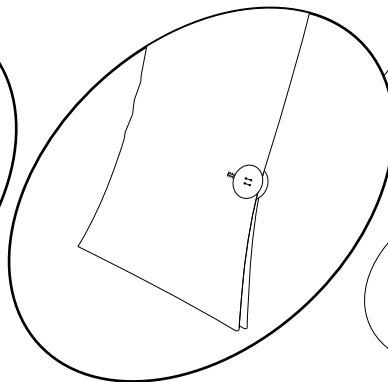


Variant **F0309**
without
buttons -
holes

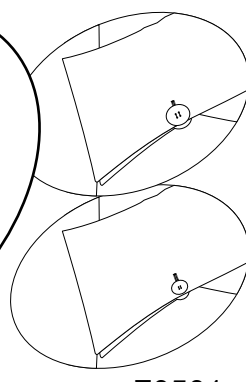
Code **F04**
Touch-squared cuff



Code **F05**
Touch-flaired cuff

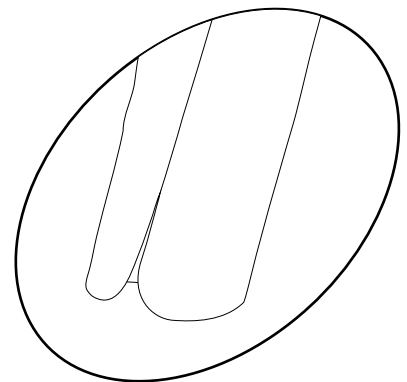


Variant **F0500**
Big buttons - 2 opposite,
real button holes

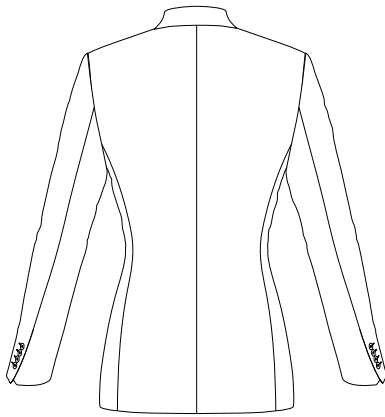


Variant **F0501**
Small buttons - 2
opposite, real button
holes

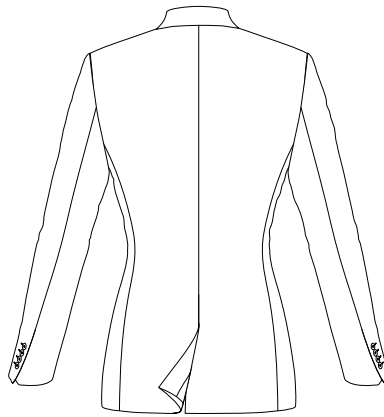
Code **F06**
Touch-round cuff



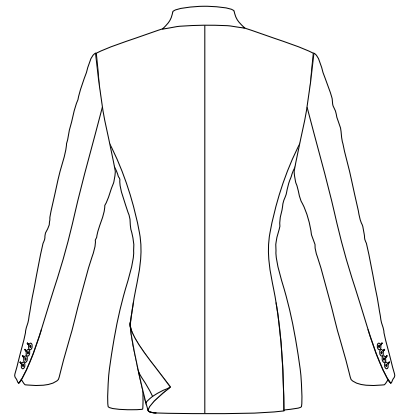
JACKET - BACK



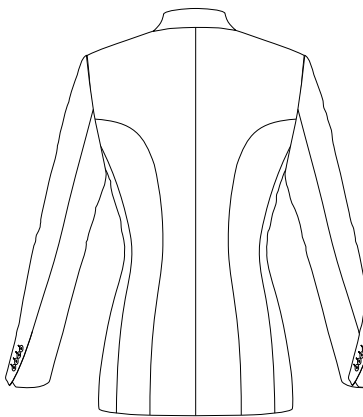
Code **E01**
normal, plain back



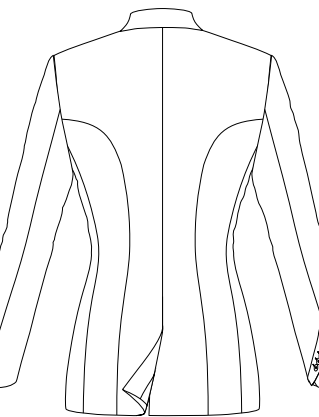
Code **E02**
normal, centre vent



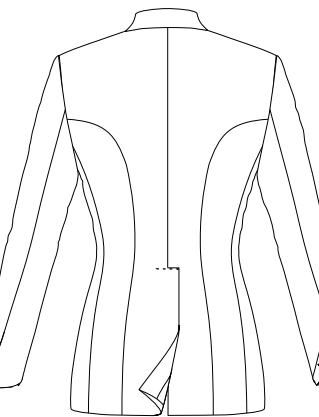
Code **E03**
normal, side vents



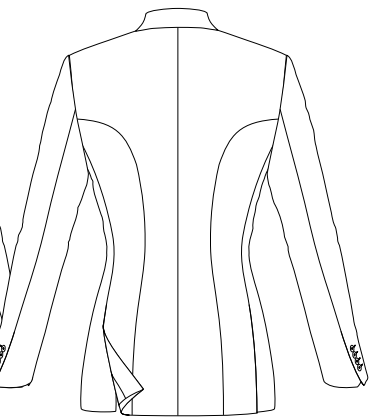
Code **E04**
princess shaped back,
no vent
(riding jacket)



Code **E05**
princess shaped back,
centre vent
(riding jacket)

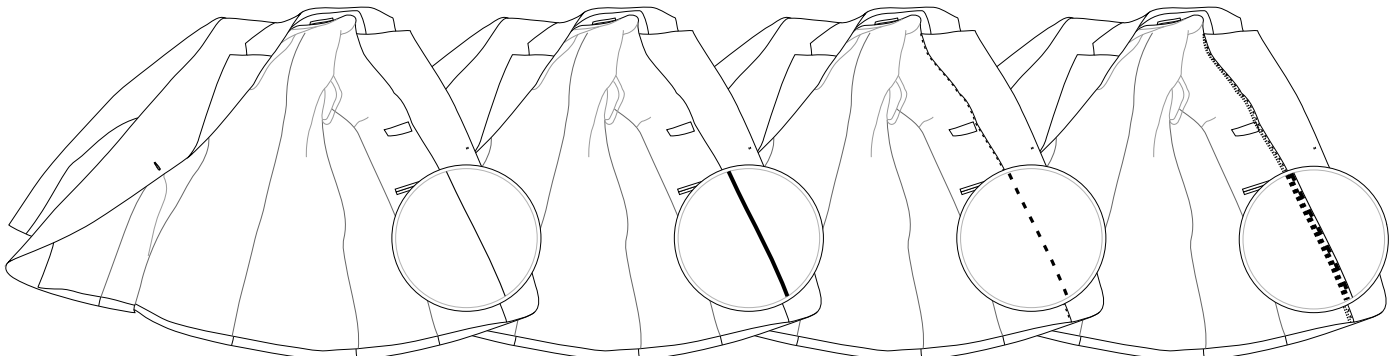


Code **E06**
princess shaped back,
backstep centre vent
(riding jacket)



Code **E07**
princess shaped back,
side vents
(riding jacket)

JACKET - INSIDE



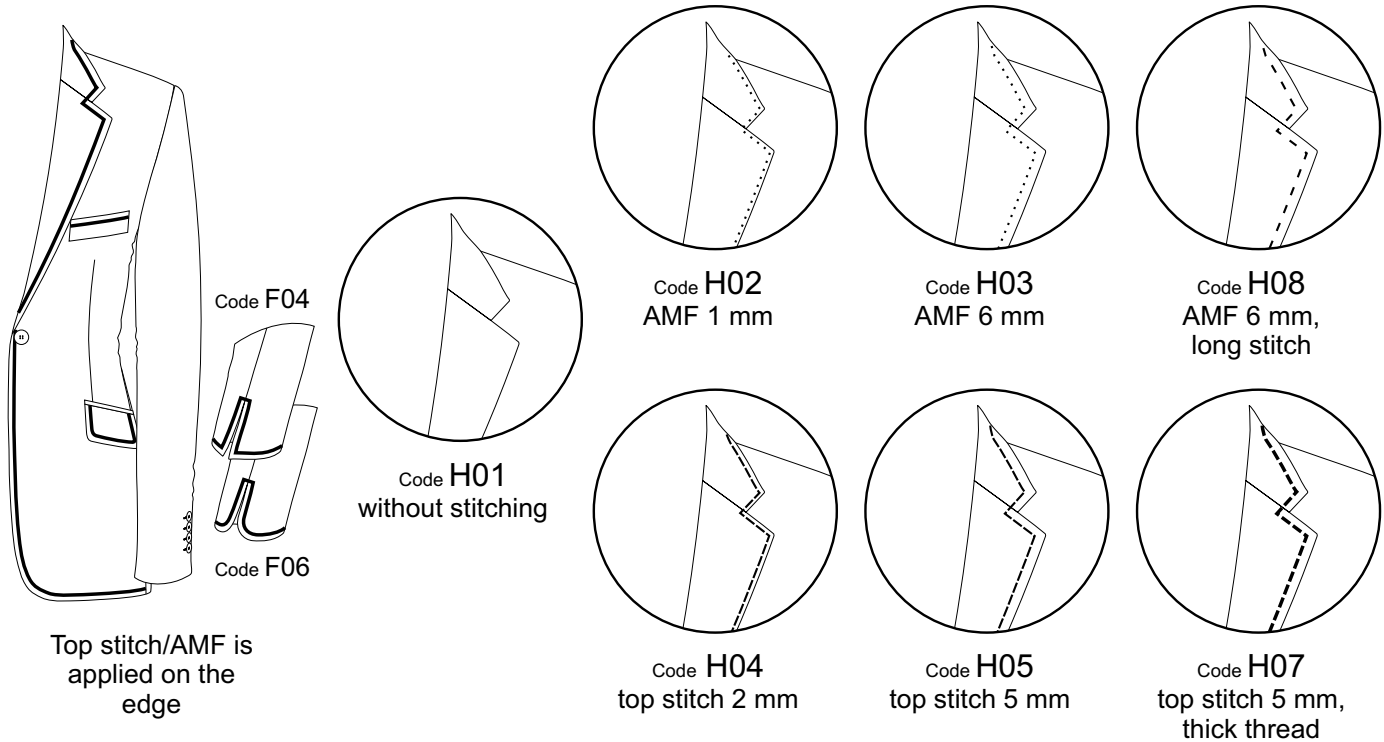
Code **G01**
straight facing,
in breast pocket left

Code **G02**
straight facing,
seam lace (beading),
in breast pocket left

Code **G03**
straight facing,
Columbia,
in breast pocket
left

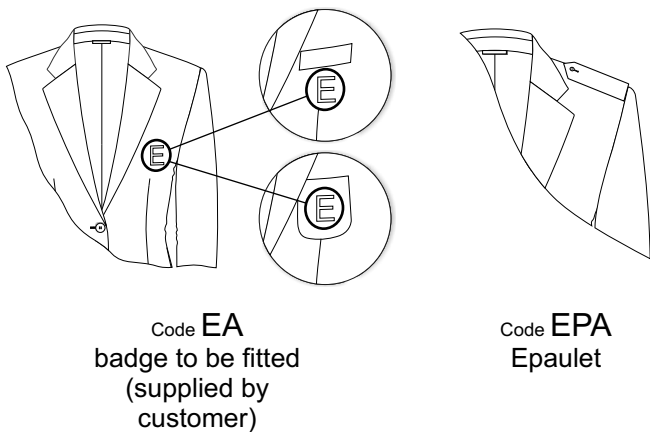
Code **G04**
straight facing,
lace,
in breast pocket
left

JACKET - STITCHING



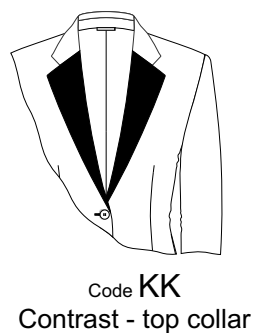
JACKET - EXTRA OPTIONS

STYLE OPTIONS



- 1TB - 2 inside pockets, left and right
- RS - Ride jacket - last button higher 1,5 cm
- FO - front without buttonholes
- AOO - sleeves without buttonholes and buttons
- AOM - sleeves without buttonholes and buttons on
- LR - Buttonhole - left lapel
- RR - Buttonhole - right lapel
- BR - Buttonhole - both lapels
- SV - Special embroidery (Description and pict.give to Bernhardt)

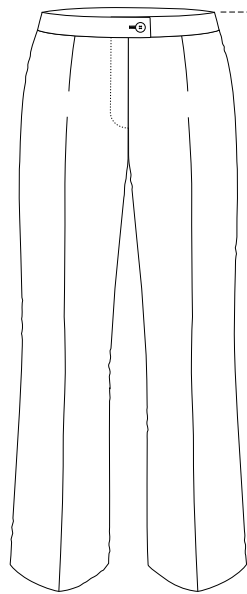
MATERIAL OPTIONS



- Leather elbow patches
- Contrast jettings inside pockets
- Contrast edge button holes
- Contrast lapel button hole
- Contrast sleeve 1st button hole
- Contrast sleeve 2nd button hole
- Contrast sleeve all button holes

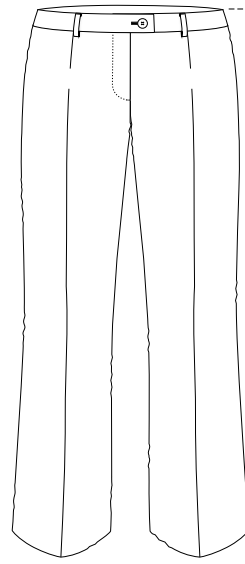
TROUSERS - MODEL

Model **FEMME**
normal seat,
shaped waisband 4 cm



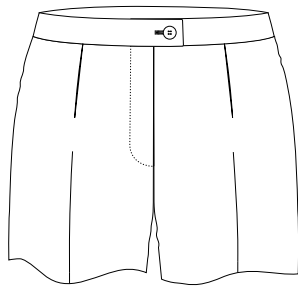
4 cm

Model **CHIC**
lower seat,
shaped waisband 3 cm

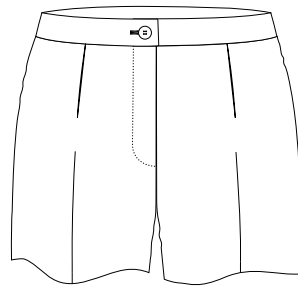


TROUSERS WAISTBAND

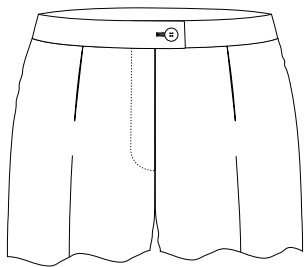
Code **A1**
waistband
with extension



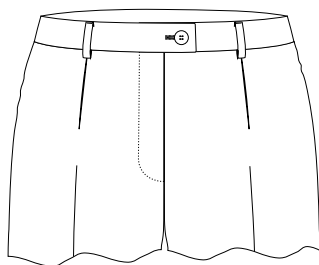
Code **A2**
waistband
without extension



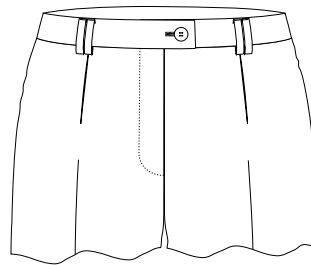
TROUSERS - WAISTBAND Variants



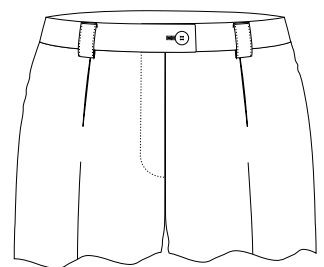
Code **Ax01**
without belt
loops



Code **Ax02**
6 belt loops

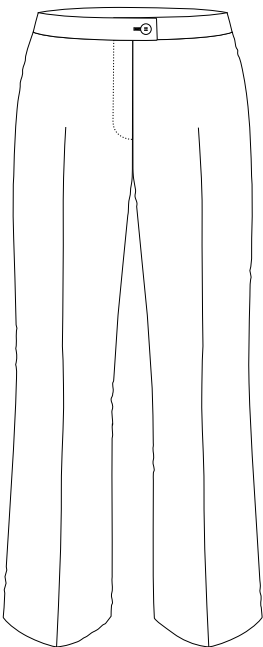


Code **Ax03**
6 double belt
loops

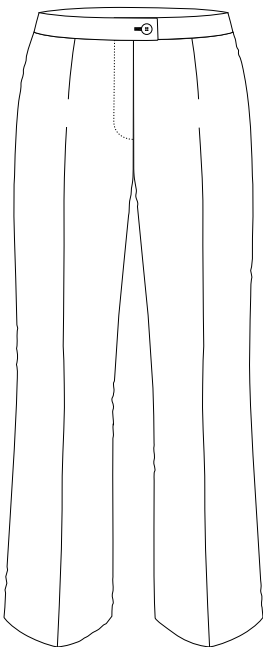


Code **Ax04**
6 wide belt
loops

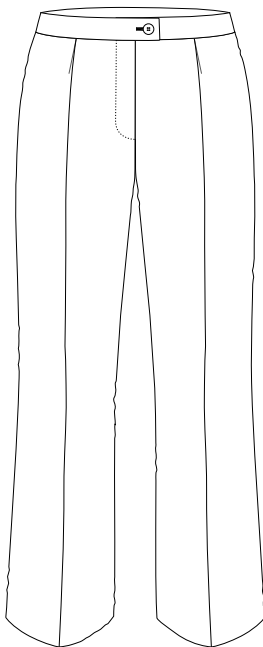
TROUSERS - BASIC STYLES



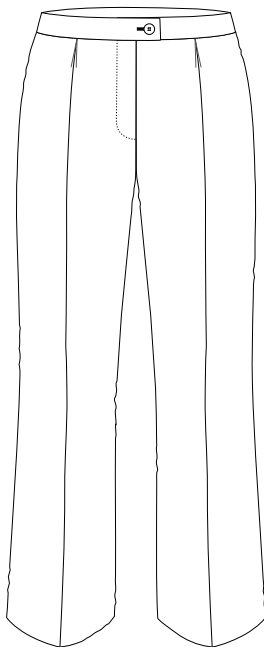
Code **B01**
plain front
without dartseam



Code **B02**
plain front
with dartseam

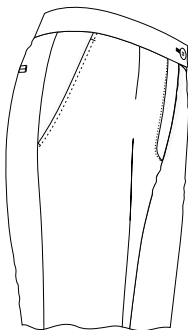


Code **B03**
1 reverse pleat

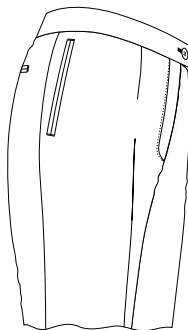


Code **B04**
box pleat

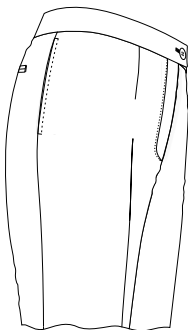
TROUSERS - FRONT POCKETS



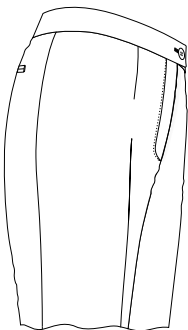
Code **C01**
slant side pockets



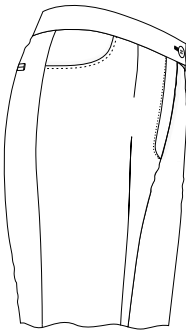
Code **C02**
jetted pockets



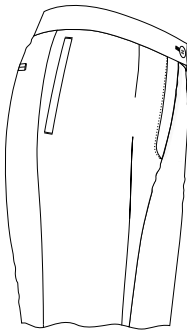
Code **C03**
straight side pockets



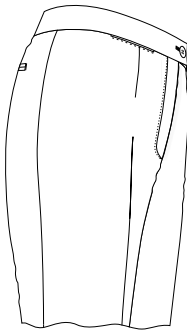
Code **C04**
without pockets



Code **C05**
round pockets



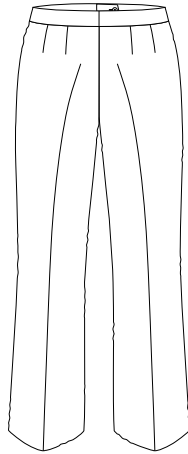
Code **C06**
welted pockets 1 cm



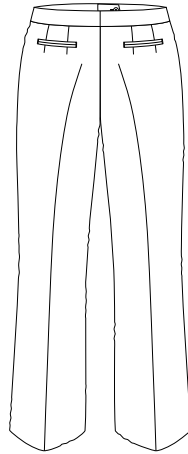
Code **C07**
watch pocket 9 cm

you can choose
Code **C0701** left
Code **C0702** right
Code **C0703** both

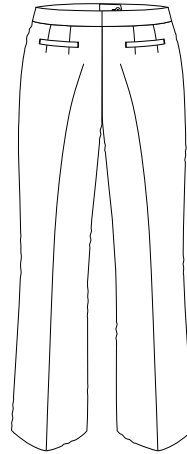
TROUSERS - HIP POCKETS



Code **D01**
without pockets



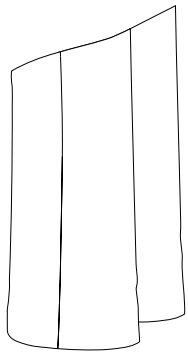
Code **D02**
jetted pockets



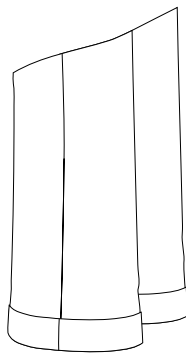
Code **D03**
welted pockets

all of them you can choose
Code **DB** both
Code **DL** left
Code **DR** right

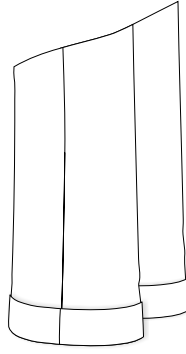
TROUSERS - BOTTOM OPTIONS



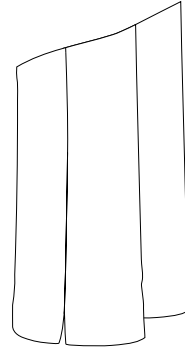
Code **E01**
plain bottom,
inlay 5 cm



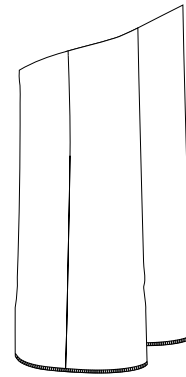
Code **E02**
turn up 4 cm



Code **E03**
turn up 5 cm



Code **E04**
vent 4 cm in
side seam



all of them you can choose
Code **EF** finished bottom
Code **EO** unfinished bottom

TROUSERS - INSIDE FITTING

- F01 - with knee linig
- F02 - without knee linig
- F03 - Fully Lined Trouser (Allergic)

TROUSERS - EXTRA FEATURES

STYLE OPTIONS

- HH - Hook instead of button
- OB - No front and back crease

MATERIAL OPTIONS

Dinner suit
trousers, single silk
side seam

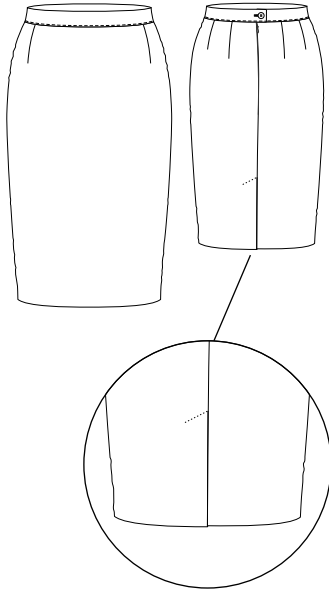


SKIRT - MODEL

FEMME

Code **FA01**

Straight, front - plain, back - centre seam

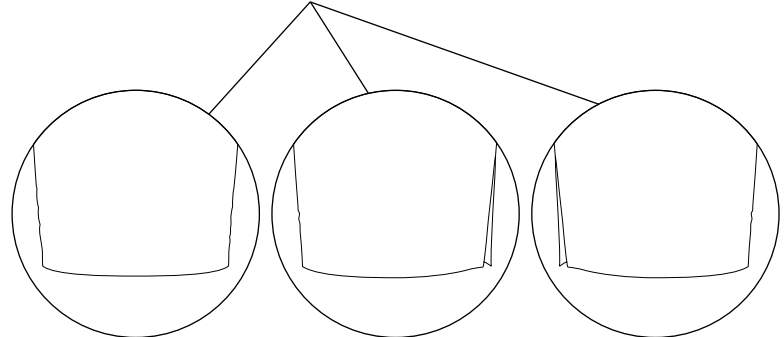
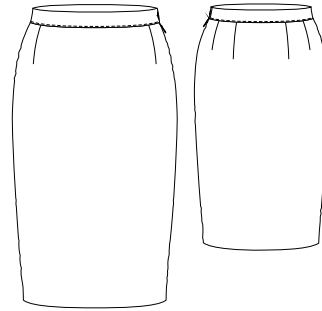


Variant
01
covered vent -
centre back

FEMME

Code **FA02**

Straight, front - plain, back - plain



Variant
00
without vent

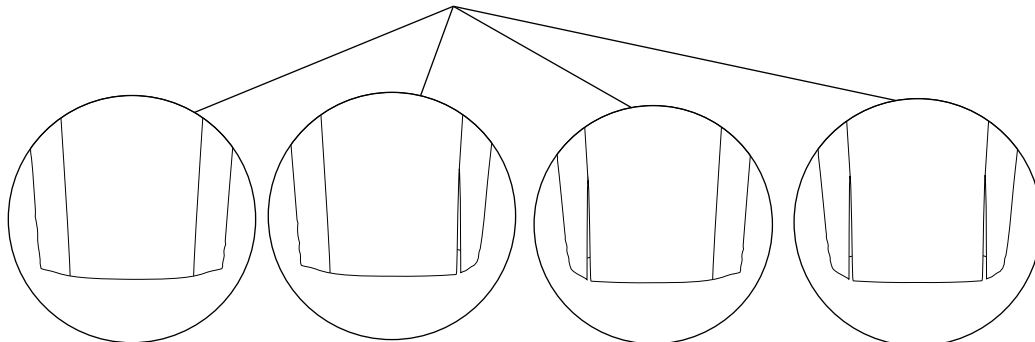
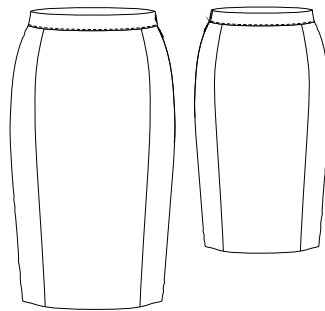
Variant
03
side vent - left
seam

Variant
04
side vent - right
seam

FEMME

Code **FA03**

Straight, front - 2 vertical seams, back - 2 vertical seams



Variant
00
without vent

Variant
05
side vent left
vertical front seams

Variant
06
side vent right
vertical front seams

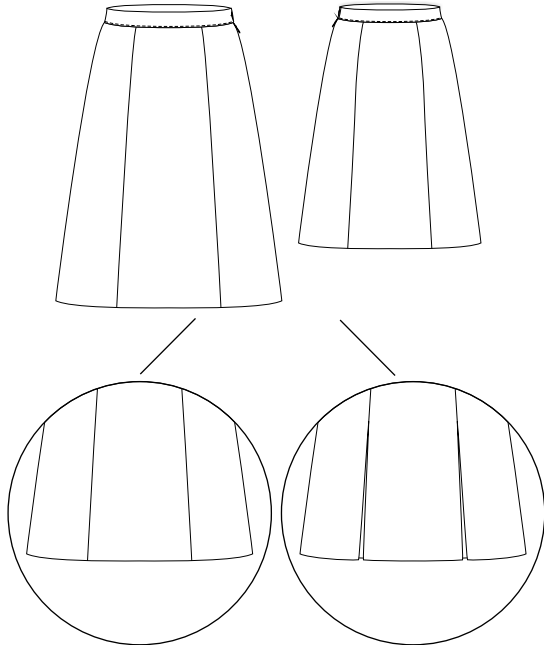
Variant
07
vents both sides
vertical front
seams

SKIRT - MODEL

GRACE

Code **GA01**

Flared skirt, front 2 vertical seams,
back - 2 vertical seams



Variant
00

without boxpleats

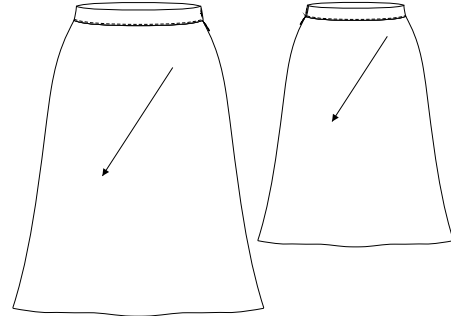
Variant
12

box pleats on the
vertical seams

BELLA

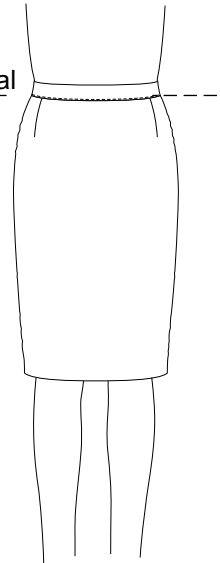
Code **BA01**

Flared skirt, bias cut, front plain, back plain

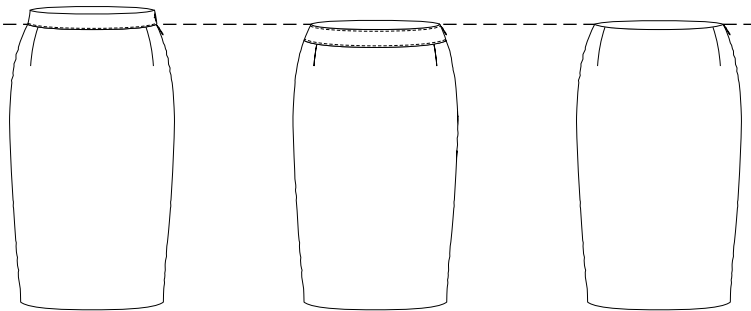


SKIRT - TYPE

Code **B01** waistposition - normal



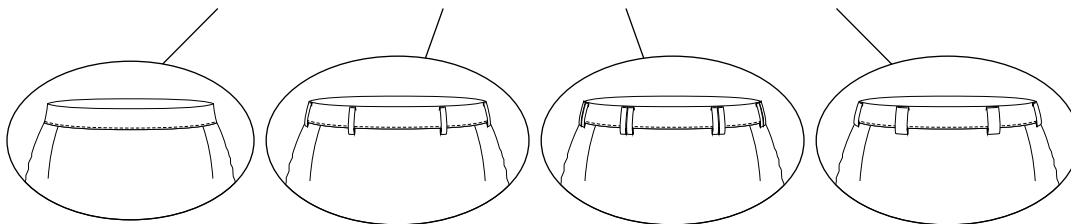
SKIRT - WAISTBAND



Code **C01**
straight waistband
3cm, with extension

Code **C02**
shaped waistband
4cm, with extension

Code **C03**
without waistband



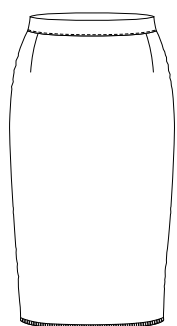
Variant
00
without loops

Variant
01
normal loops

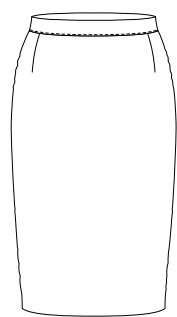
Variant
02
double belt loops

Variant
03
wide belt loops

SKIRT - BOTTOM



Code **F01**
Unfinished bottom



Code **F02**
Finished bottom

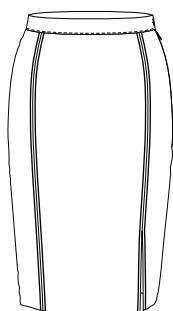
SKIRT - INSIDE FITTING

- G01 - with lining
- G02 - without lining

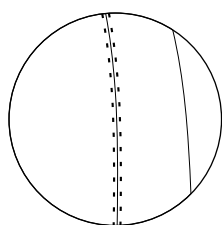
SKIRT EXTRA OPTIONS

STYLE OPTIONS

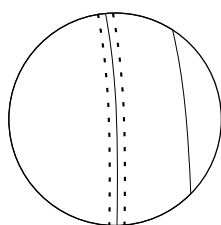
SKIRT - VERTICAL FRONT AND BACK SEAM'S STITCHING



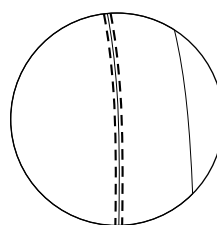
Only stitching and AMF is available on vertical seams



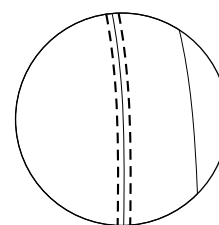
Code **H02**
AMF 1 mm



Code **H03**
AMF 6 mm



Code **H04**
top stitch 2 mm



Code **H05**
top stitch 5 mm

HH - Hook instead of button on waistband extension